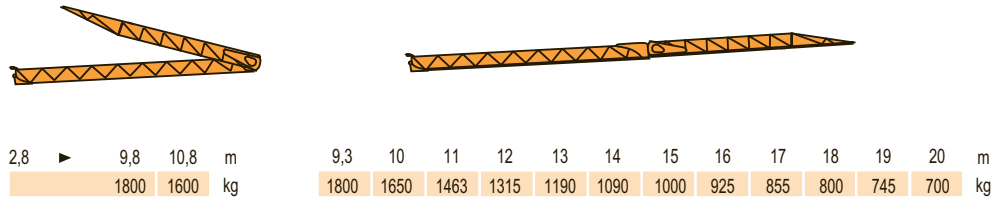


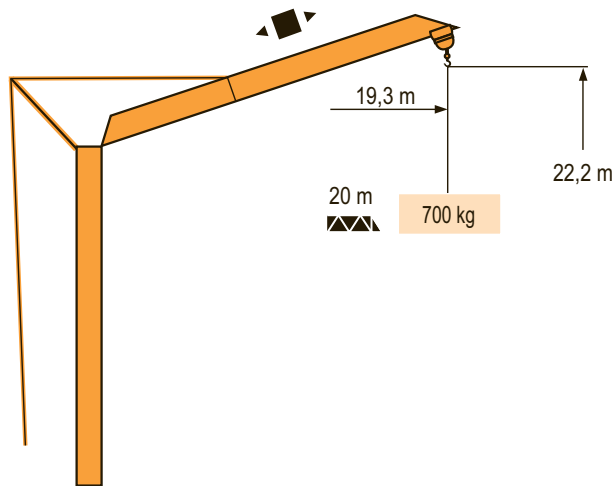
CE FEM 1.001-A3

Courbes de charges  
 Lastkurven  
 Load diagrams  
 Curvas de cargas  
 Curve di carico 20 m  
 Curva de cargas



LXX 1

Flèche relevée  
 Ausleger in Steilstellung  
 Luffing jib  
 Flecha izada  
 Braccio impennato  
 Lança inclinada



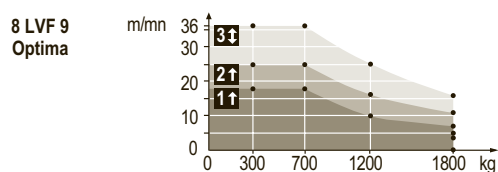
LXX 1

	<b>F</b> Chariot distributeur Réactions en service Réactions hors service A vide sans lest (ni train de transport) avec flèche et hauteur maximum.	<b>D</b> Verfahrbare Laufkatze Reaktionskräfte in Betrieb Reaktionskräfte außer Betrieb Ohne Last, Ballast (und Transportachse), mit Maximalausleger und Maximalhöhe.	<b>GB</b> Traversing trolley Reactions in service Reactions out of service Without load, ballast (or transport axes), with maximum jib and maximum height.	<b>E</b> Carro distribuidor Reacciones en servicio Reacciones fuera de servicio Sin carga, sin lastre, (ni tren de transporte), flecha y altura máxima.	<b>I</b> Carrellino distributore Reazioni in servizio Reazioni fuori servizio A vuoto, senza zavorra (ne assali di trasporto) con braccio massimo e altezza massima.	<b>P</b> Carro distribuidor Reacções em serviço Reacções fora de serviço Sem carga (nem trem de transporte)- sem lastro com lança e altura máximas.
--	--	---	--	---	--	---

Mécanismes  
Antriebe  
Mechanisms  
Mecanismos  
Meccanismi  
Mecanismos

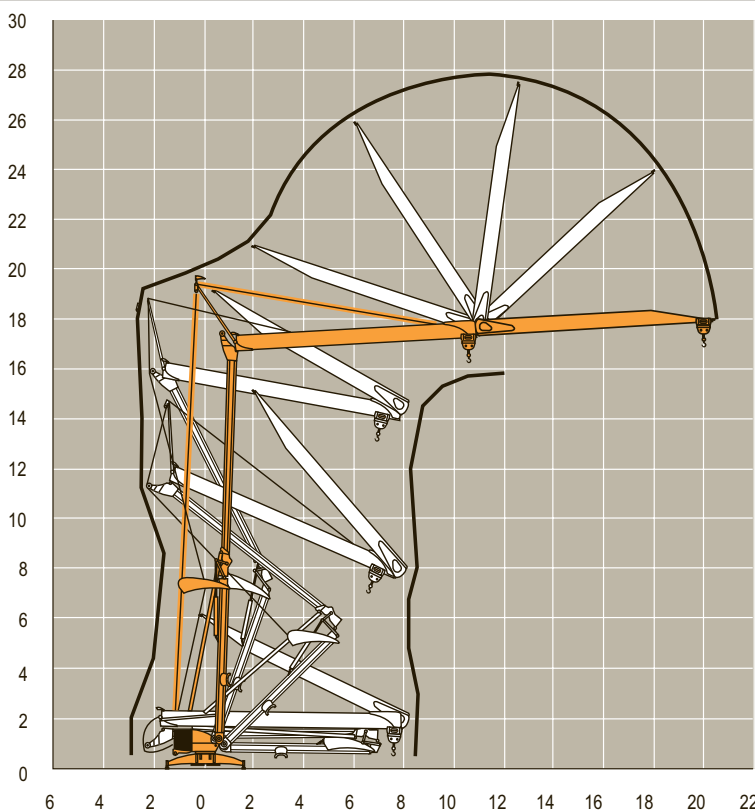
LXX 2

				🐢		🐌		🐇		ch - PS	kW
▲ ▼	8 LVF 9 Optima	230 V 20 A <b>1</b>	m/min	↑ 3,5 ↓ 3,5	↑ 7 ↓ 16	↑ 18 ↓ 36				3,3	2,4
		230 V 32 A <b>2</b>	m/min	↑ 3,5 ↓ 3,5	↑ 11 ↓ 16	↑ 25 ↓ 36				5,2	3,8
		400 V <b>3</b>	m/min	↑ 3,5 ↓ 3,5	↑ 16 ↓ 16	↑ 36 ↓ 36				7,5	5,5
◀ ▶	1 DVF 4	-	m/min	14 - 28						1,5	1,1
🌀	RVF 20	-	tr/min U/min rpm	0 → 1						1,5	1,1
CEI 38  IEC 38				kVA							
230 V(+6% -10%) 50 Hz <b>—</b> 400 V(+6% -10%) 50 Hz				230 V 20 A : 4,6 kVA 230 V 32 A : 7,4 kVA 400 V : 11 kVA							



Montage  
Montage  
Erection  
Montaje  
Montaggio  
Montagem

LXX 1

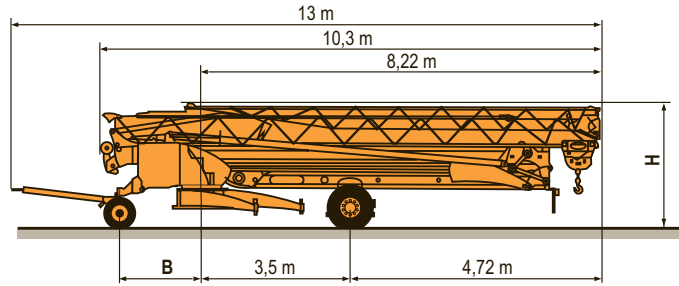


F	D	GB	E	I	P
Levage	Heben	Hoisting	Elevación	Sollevamento	Elevação
Distribution	Katzfahren	Trolleying	Distribución	Distribuzione	Distribuição
Orientation	Schwenken	Slewing	Orientación	Rotazione	Rotação
50 Hz Monophasé	50 Hz Einphasige	50 Hz Single phase	50 Hz Monofasica	50 Hz Monofase	50 Hz monofásica

Transport  
Transport  
Transport  
Transporte  
Trasporto  
Transporte

LXN 2

- DS51/S70 ○
- DS61/S80 ○
- DS61/S120 ○
- DS61/S125
- DS65/S65
- DJ80/S120 ○
- DJ80/S125
- DJ100/S120
- DJ105/S125
- DJ126M/S125



	B (m)	H (m)
DS51/S70	1,93	2,85/3
DS61/S80	2,03	2,85/3
DS61/S120	2,03	2,85/3
DS61/S125	2,03	2,85/3
DS65/S65	1,93	2,85/3
DJ80/S120	2,03	2,82/2,97
DJ80/S125	2,03	2,82/2,97
DJ100/S120	2,03	2,82/2,97
DJ105/S125	2,03	2,82/2,97
DJ126M/S125	2,03	3,65/3,8

	F	D	GB	E	I	P
○	Chantier	Baustelle	Site	Obra	Cantiere	Estaleiro



Document commercial non contractuel. Pour toute information technique se référer à la notice correspondante.

Unverbindliches Vertriebsdokument. Für technische Informationen, siehe die entsprechenden Anweisungen.

This commercial document is not legally binding. For any technical information, please refer to the corresponding instructions.

Documento comercial no contractual. Para cualquier información técnica, ver la noticia correspondiente.

Documento commerciale non vincolante, per tutte le informazioni tecniche fare riferimento al catalogo istruzioni.

Documento comercial não contractual. Para qualquer informação técnica complementar consultar as respectivas instruções.



**ARCOMET**

Industrieweg 139 - 3583 Paal-Beringen - BELGIUM - T +32 (0)11 450 950 - EMAIL [arcomet@arcomet.com](mailto:arcomet@arcomet.com) - [www.arcomet.com](http://www.arcomet.com)

**POTAIN**