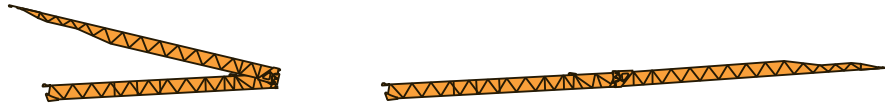


CE FEM 1.001-A3

Courbes de charges
Lastkurven
Load diagrams
Curvas de cargas
Curve di carico
Curva de cargas

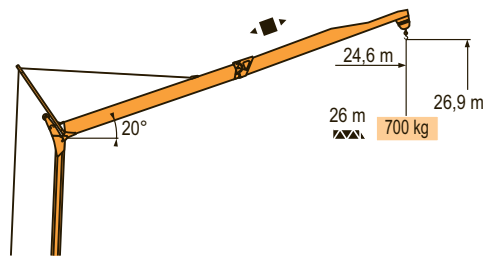
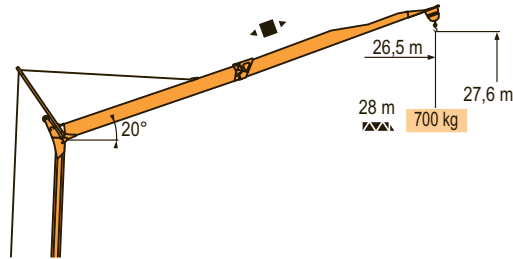


MCP 2

28 m	3	▶	13,3 m	15	16	17	18	19	20	21	22	23	24	25	26	27	28 m
▲▲▲	1800 kg			1800	1670	1555	1450	1360	1275	1205	1140	1080	1025	975	930	890	850 kg
26 m	3	▶	13,3 m	16	17	18	19	20	21	22	23	24	25	26 m			
▲▲▲	1800 kg			1800	1665	1555	1455	1370	1290	1220	1160	1100	1050	1000 kg			

Flèche relevée
Ausleger in Steilstellung
Luffing jib
Flecha izada
Braccio impennato
Lança inclinada

MCP 1



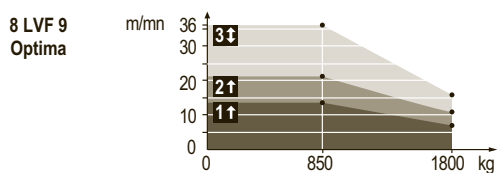
Igo 22

	F Chariot distributeur Réactions en service Réactions hors service A vide sans lest (ni train de transport) avec flèche et hauteur maximum.	D Verfahrbare Laufkatze Reaktionskräfte in Betrieb Reaktionskräfte außer Betrieb Ohne Last, Ballast (und Transportachse), mit Maximalausleger und Maximalhöhe.	GB Traversing trolley Reactions in service Reactions out of service Without load, ballast (or transport axes), with maximum jib and maximum height.	E Carro distribuidor Reacciones en servicio Reacciones fuera de servicio Sin carga, sin lastre, (ni tren de transporte), flecha y altura máxima.	I Carrellino distributore Reazioni in servizio Reazioni fuori servizio A vuoto, senza zavorra (ne assali di trasporto) con braccio massimo e altezza massima.	P Carro distribuidor Reacções em serviço Reacções fora de serviço Sem carga (nem trem de transporte)- sem lastro com lança e altura máximas.
--	--	---	--	---	--	---

Mécanismes
Antriebe
Mechanisms
Mecanismos
Meccanismi
Mecanismos

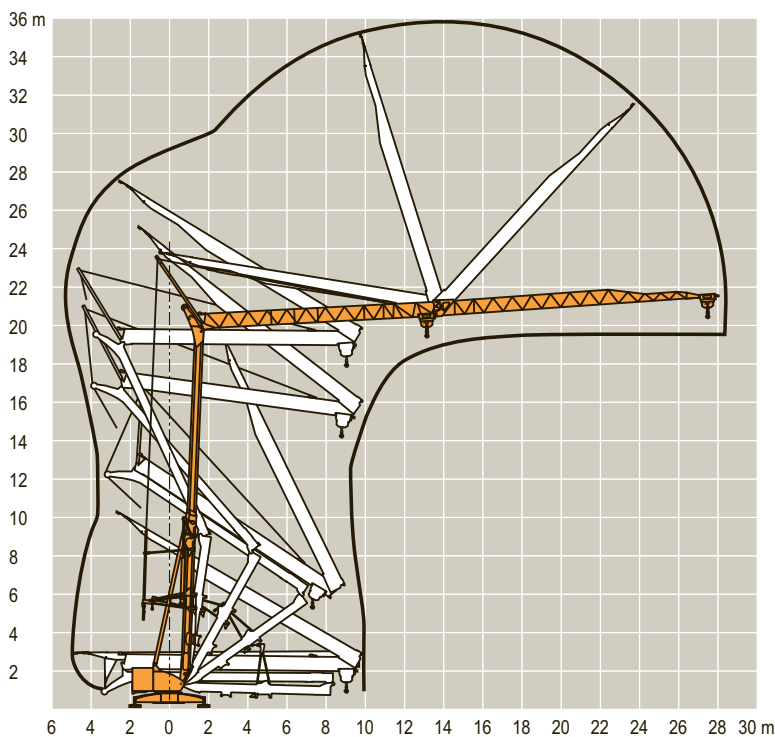
MCP 3

							ch - PS hp	kW	
	8 LVF 9 Optima	230 V	m/min	↑ 3,5 ↓ 3,5	↑ 7 ↓ 16	↑ 14 ↓ 36	3,3	2,4	
		20 A 1	kg	1800	1800	850			
		230 V	m/min	↑ 3,5 ↓ 3,5	↑ 11 ↓ 16	↑ 21 ↓ 36	5,2	3,8	
		32 A 2	kg	1800	1800	850			
		400 V 3	m/min	↓ 3,5	↓ 16	↓ 36	7,5	5,5	
			kg	1800	1800	850			
	1 DVF 4	-	m/min	14 → 36 (0 → 850 kg) - 14 → 28 (850 → 1800 kg)			1,5	1,1	
	RVF 31	-	tr/min U/min rpm	0 → 0,8			2	1,5	
CEI 38				IEC 38					
230 V(+6% -10%) 50 Hz - 60 HZ				230 V 20 A: 4,6 kVA 230 V 32 A: 7,4 kVA					
400 V(+6% -10%) 50 Hz				400 V : 11 kVA					
480 V (+6% -10%) 60 Hz				480 V : 11 kVA					



Montage
Montage
Erection
Montaje
Montaggio
Montagem

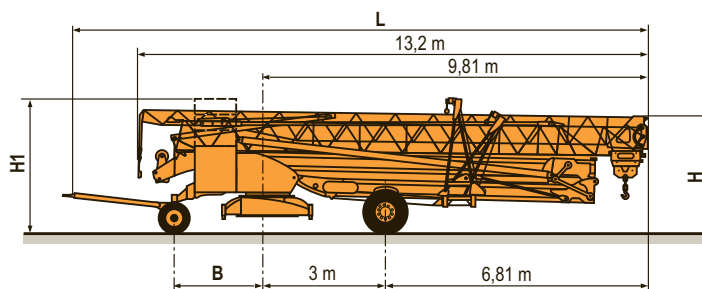
MCP 1



Igo 22

F	D	GB	E	I	P
	Heben	Hoisting	Elevación	Sollevarmento	Elevação
	Katzfahren	Trolleying	Distribución	Ditribuzione	Distribuição
	Schwenken	Slewing	Orientación	Rotazione	Rotação
	50 Hz Einphasige	50 Hz Single phase	50 Hz Monofasica	50 Hz Monofase	50 Hz monofásica

Transport	DS51/S70	○
Transport	DS61/S80	○
Transport	DS61/S120	○
Transporte	DS61/S125	
MCP 2	DJ80/S120	○
	DJ80/S125	
	DJ100/S120	
	DJ105/S125	
	DJ126M/S125	



	L (m)	B (m)	H (m)	H1 (m)
DS51/S70	14,48	2,35	3,03/3,18	-
DS61/S80	14,77	2,45	3,18	-
DS61/S120	14,77	2,45	3,03/3,18	-
DS61/S125	14,77	2,45	3,03/3,18	-
DJ80/S120	14,77	2,45	3,05/3,20	-
DJ80/S125	14,77	2,45	3,05/3,20	-
DJ100/S120	14,77	2,45	3,05/3,20	3,21/3,36
DJ105/S125	14,77	2,45	3,05/3,20	3,21/3,36
DJ126M/S125	14,77	2,45	3,20	3,34

Igo 22

<input type="radio"/>	F Chantier	D Baustelle	GB Site	E Obra	I Cantiere	P Estaleiro
-----------------------	----------------------	-----------------------	-------------------	------------------	----------------------	-----------------------



Document commercial non contractuel. Pour toute information technique se référer à la notice correspondante.

Unverbindliches Vertriebsdokument. Für technische Informationen, siehe die entsprechenden Anweisungen.

This commercial document is not legally binding. For any technical information, please refer to the corresponding instructions.

Documento comercial no contractual. Para cualquier información técnica, ver la noticia correspondiente.

Documento commerciale non vincolante, per tutte le informazioni tecniche fare riferimento al catalogo istruzioni.

Documento comercial não contratual. Para qualquer informação técnica complementar consultar as respectivas instruções.



ARCOMET

Industrieweg 139 - 3583 Paal-Beringen - BELGIUM - T +32 (0)11 450 950 - EMAIL arcomet@arcomet.com - www.arcomet.com

POTAIN