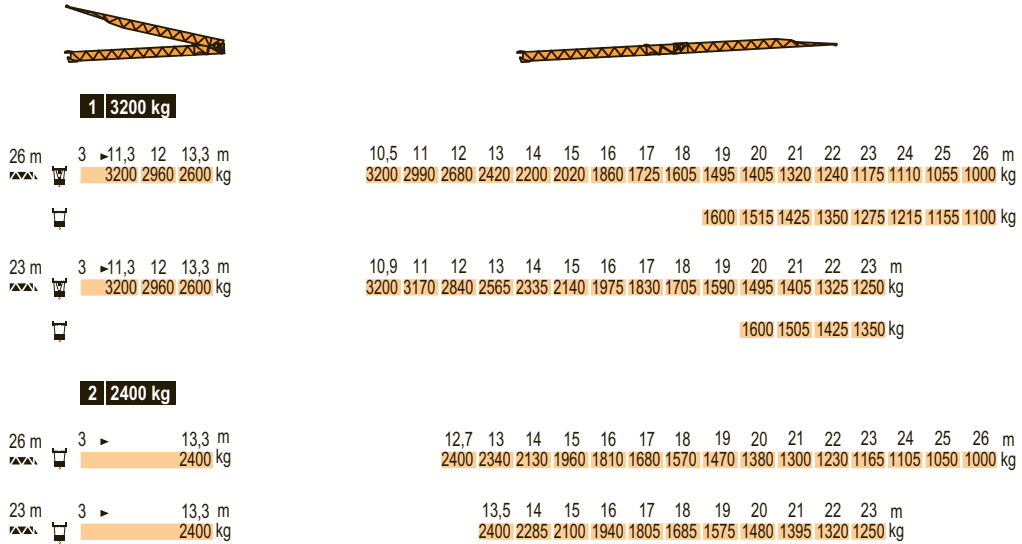


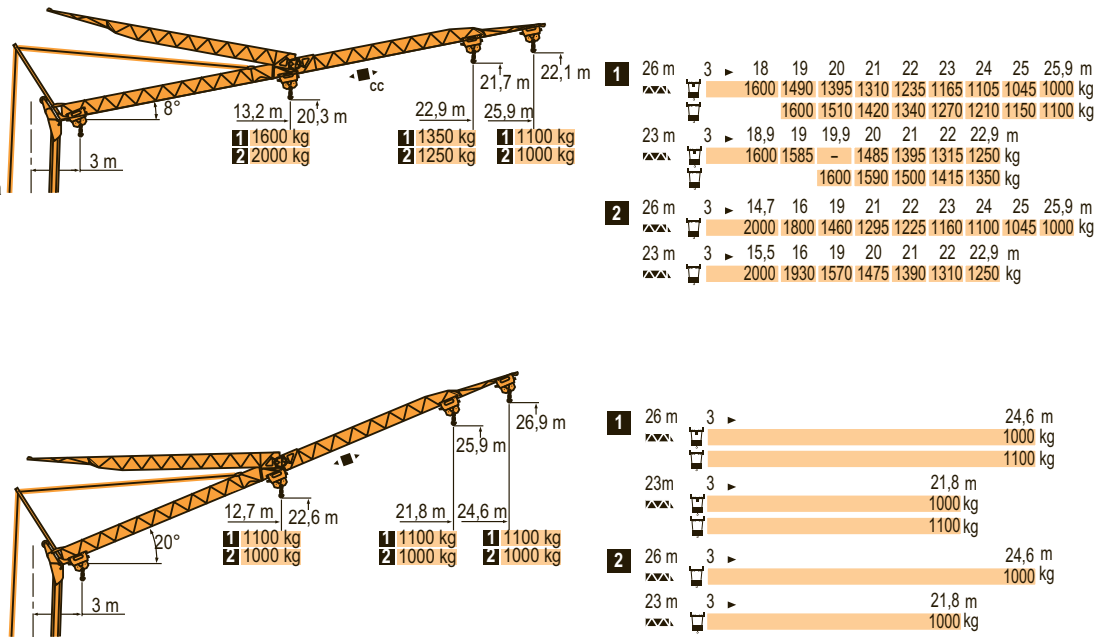
Courbes de charges
Lastkurven
Load diagrams
Curvas de cargas
Curve di carico
Curva de cargas

LXP 1



Flèche relevée
Ausleger in Steilstellung
Luffing jib
Flecha izada
Braccio impennato
Lança inclinada

LXP 1



Igo 26

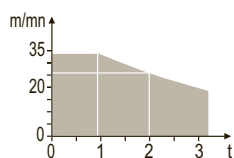
	F	D	GB	E	I	P
	Chariot distributeur	Verfahrbare Laufkatze	Traversing trolley	Carro distribuidor	Carrellino distributore	Carro distribuidor
	Chariot distributeur et courbes de charges	Verfahrbare Laufkatze und Lastkurven	Traversing trolley and load diagrams	Carro distribuidor y curvas de cargas	Carrellino distributore e curve di carico	Carro distribuidor e curva de cargas
	Réactions en service	Reaktionskräfte in Betrieb	Reactions in service	Reacciones en servicio	Reazioni in servizio	Reacções em serviço
	Réactions hors service	Reaktionskräfte außer Betrieb	Reactions out of service	Reacciones fuera de servicio	Reazioni fuori servizio	Reacções fora de serviço
	A vide sans lest (ni train de transport) avec flèche et hauteur maximum.	Ohne Last, Ballast (und Transportachse), mit Maximalausleger und Maximalhöhe.	Without load, ballast (or transport axles), with maximum jib and maximum height.	Sin carga, sin lastre, (ni tren de transporte), flecha y altura máxima.	A vuoto, senza zavorra (ne assali di trasporto) con braccio massimo e altezza massima.	Sem carga (nem trem de transporte)- sem lastro com lança e altura máximas.

Mécanismes
Antriebe
Mechanisms
Mecanismos
Meccanismi
Mecanismos

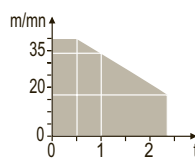
LXP 2

												ch - PS hp	kW	
	15 LVF 10 Optima	m/min	3,6	18	37	49	66						15	11
		kg	1600	1600	1600	1100	500							
		m/min	3,6	18	37	54	66	1,8	9	19	27	33		
		kg	1600	1600	1600	1000	500	3200	3200	3200	2000	1000		
	3 DVF5	m/min	19 - 41									3	2,2	
	10 LVF 12 Optima	m/min	2	10	17	34	40						10	7,5
		kg	2400	2400	2400	1000	500							
	2 DVF5	m/min	15 - 38 (0 → 1000 kg)				15 - 30 (1000 → 2400 kg)				2	1,5		
	RVF2	tr/min U/min rpm	0 → 0,8									2	1,5	
		CEI 38	IEC 38				kVA							
		400 V (+6% -10%) 50 Hz				15 LVF 10 : 20 kVA 10 LVF 12 : 14 kVA								

15 LVF 10
Optima

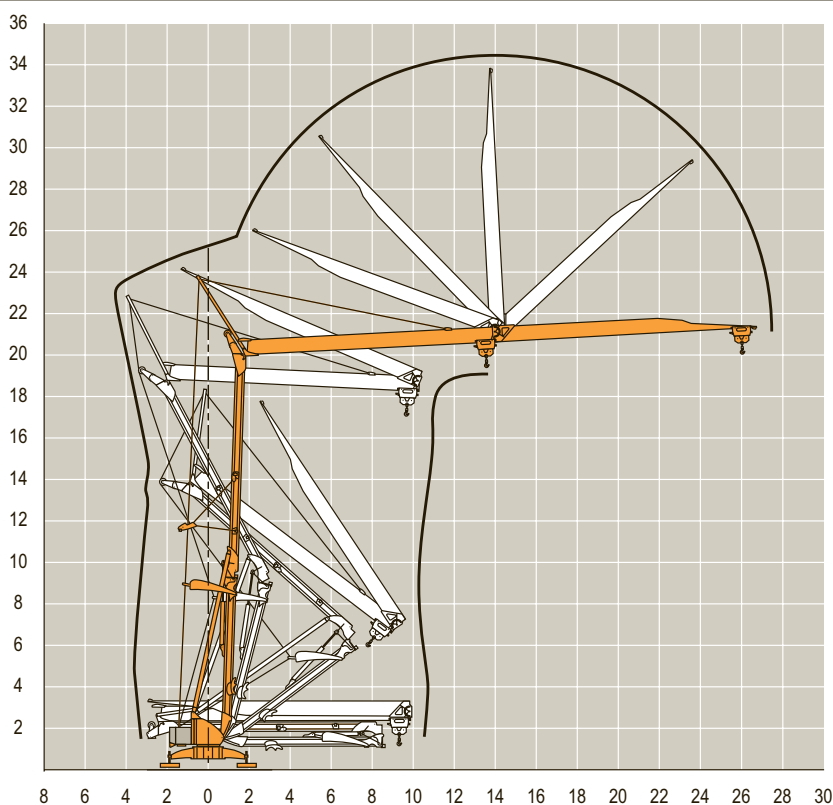


10 LVF 12
Optima



Montage
Montage
Erection
Montaje
Montaggio
Montagem

LXP 1

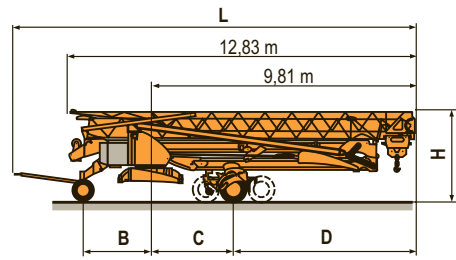


Igo 26

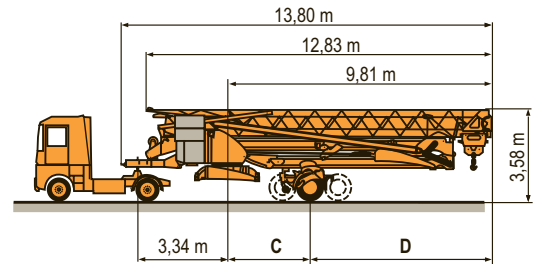
	F	Levage Distribution Orientation		D	Heben Katzfahren Schwenken		GB	Hoisting Trolleying Slewing		E	Elevación Distribución Orientación		I	Sollevamento Distribuzione Rotazione		P	Elevação Distribuição Rotação
--	----------	---------------------------------------	--	----------	----------------------------------	--	-----------	-----------------------------------	--	----------	--	--	----------	--	--	----------	-------------------------------------

Transport	DS61/S120		L (m)	B (m)	C (m)	D (m)	H (m)
Transport	DS61/S125	DS61/S120	14,9	2,45	3	6,81	3,05/3,2
Transport	DJ80/S120	DJ80/S120	14,9	2,45	3	6,81	3,1
Transporte	DJ80/S125	DJ80/S125	14,9	2,45	3	6,81	3,1
Trasporto	DJ100/S120	DJ100/S120	15,33	2,45	3	6,81	3,1/3,23
Transporte	DJ105/S125	DJ105/S125	15,33	2,45	3	6,81	3,1/3,23
	DJ126M/S125	DJ126M/S125	15,35	2,45	3	6,81	3,2
	DJ126M/S215M	DJ126M/S215M	16,14	3,24	5,37	4,44	3,55

LXP 2



		C (m)	D (m)
SL122/J215M			
SL121/J135	SL122/J215M	5,37	4,44
SL121/S215M	SL121/J135	3	6,81
	SL121/S215M	5,37	4,44



	F	D	GB	E	I	P
○	Chantier	Baustelle	Site	Obra	Cantiere	Estaleiro



Document commercial non contractuel. Pour toute information technique se référer à la notice correspondante.

Unverbindliches Vertriebsdokument. Für technische Informationen, siehe die entsprechenden Anweisungen.

This commercial document is not legally binding. For any technical information, please refer to the corresponding instructions.

Documento commercial no contractual. Para cualquier información técnica, ver la noticia correspondiente.

Documento commerciale non vincolante, per tutte le informazioni tecniche fare riferimento al catalogo istruzioni.

Documento comercial não contractual. Para qualquer informação técnica complementar consultar as respectivas instruções.



ARCOMET

Industrieweg 139 - 3583 Paal-Beringen - BELGIUM - T +32 (0)11 450 950 - EMAIL arcomet@arcomet.com - www.arcomet.com

POTAIN