

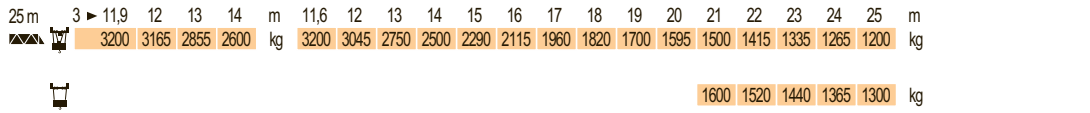
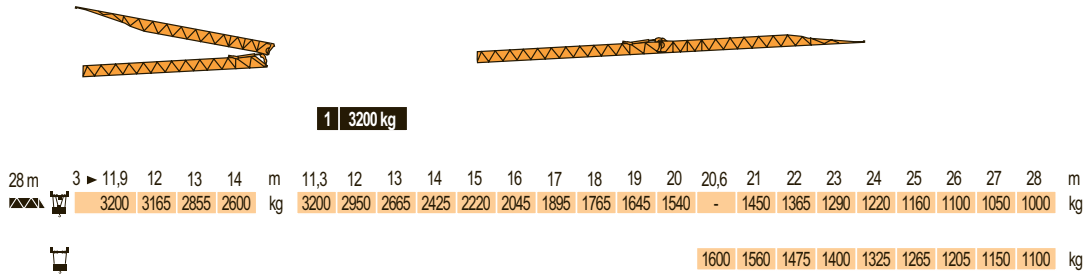
CE FEM 1.001-A3



ARCOMET
 www.arcomet.com

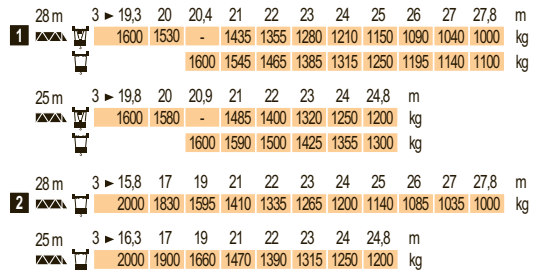
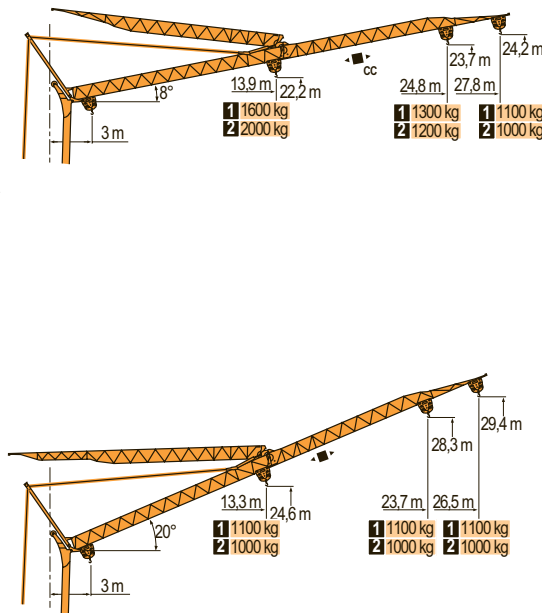
Courbes de charges
Lastkurven
Load diagrams
Curvas de cargas
Curve di carico
Curva de cargas

LXQ 1



Flèche relevée
Ausleger in Steilstellung
Luffing jib
Flecha izada
Braccio impennato
Lança inclinada











LXQ 1



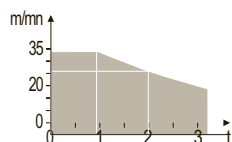
	F Chariot distributeur Chariot distributeur et courbes de charges	D Verfahrbare Laufkatze Verfahrbare Laufkatze und Lastkurven	GB Traversing trolley Traversing trolley and load diagrams	E Carro distribuidor Carro distribuidor y curvas de cargas	I Carrellino distributore Carrellino distributore e curve di carico	P Carro distribuidor Carro distribuidor e curva de cargas
	● Réactions en service ● Réactions hors service	● Reaktionskräfte in Betrieb ● Reaktionskräfte außer Betrieb	● Reactions in service ● Reactions out of service	● Reacciones en servicio ● Reacciones fuera de servicio	● Reazioni in servizio ● Reazioni fuori servizio	● Reações em serviço ● Reações fora de serviço
	A vide sans lest (ni train de transport) avec flèche et hauteur maximum.	Ohne Last, Ballast (und Transportachse), mit Maximalausleger und Maximalhöhe.	Without load, ballast (or transport axles), with maximum jib and maximum height.	Sin carga, sin lastre, (ni tren de transporte), flecha y altura máxima.	A vuoto, senza zavorra (ne assali di trasporto) con braccio massimo e altezza massima.	Sem carga (nem trem de transporte)- sem lastro com lança e altura máximas.

Mécanismes
Antriebe
Mechanisms
Mecanismos
Meccanismi
Mecanismos

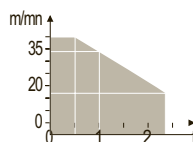
LXQ 2

												ch - PS hp	kW	
	15 LVF 10 Optima	m/min	3,6	18	37	49	66						15	11
		kg	1600	1600	1600	1100	500							
	3 DVF5	m/min	19 - 41										3	2,2
			RVF+31	0 → 0,8										
	10 LVF 12 Optima	m/min	2	10	17	34	40						10	7,5
		kg	2400	2400	2400	1000	500							
	2 DVF5	m/min	15 - 38 (0 → 1000 kg)					15 - 30 (1000 → 2400 kg)					2	1,5
	RVF2-30	tr/min U/min rpm	0 → 0,8											
		CEI 38	 IEC 38		 kVA									
		400 V (+6% -10%) 50 Hz					15 LVF 10 : 20 kVA 10 LVF 12 : 14 kVA							

15 LVF 10 Optima

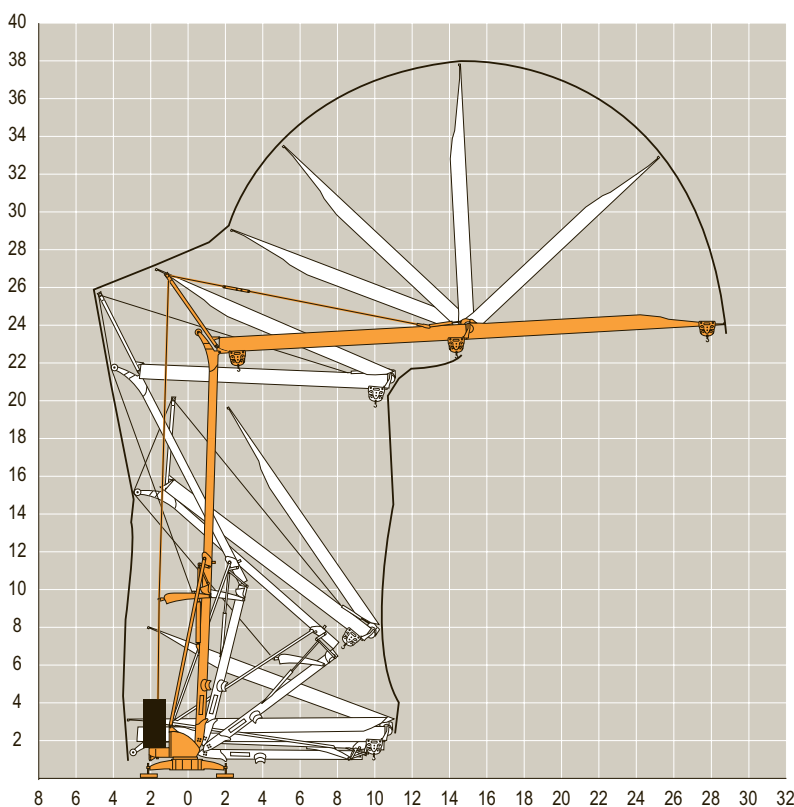



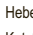
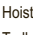











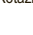
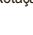
10 LVF 12 Optima



Montage
Montage
Erection
Montaje
Montaggio
Montagem

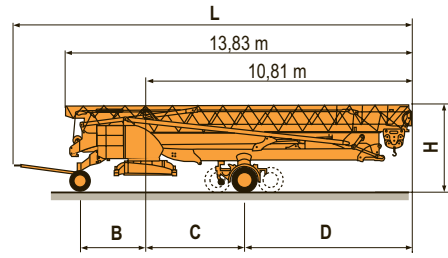
LXQ 1



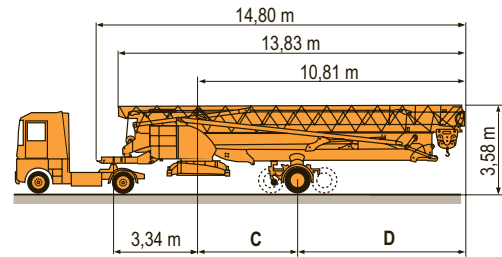
F	D	GB	E	I	P
 Levage	 Heben	 Hoisting	 Elevación	 Sollevamento	 Elevação
 Distribution	 Katzfahren	 Trolleying	 Distribución	 Distribuzione	 Distribuição
 Orientation	 Schwenken	 Slewing	 Orientación	 Rotazione	 Rotação

Transport	DS61/S120		L (m)	B (m)	C (m)	D (m)	H (m)
Transport	DS61/S125	DS61/S120	15,9	2,45	4	6,81	3,05/3,2
Transport	DS61/S125	DS61/S125	15,9	2,45	4	6,81	3,05/3,2
Transporte	DJ80/S120	DJ80/S120	15,9	2,45	4	6,81	3,1
Trasporto	DJ80/S125	DJ80/S125	15,9	2,45	4	6,81	3,1
Transporte	DJ100/S120	DJ100/S120	16,33	2,45	4	6,81	3,1/3,23
	DJ100/S120	DJ105/S125	16,33	2,45	4	6,81	3,1/3,23
	DJ105/S125	DJ126M/S125	16,35	2,45	4	6,81	3,2
	DJ105/S125	DJ126M/S215M	17,14	3,24	4,07	6,74	3,55
	DJ126M/S125						
	DJ126M/S215M						

LXQ 2



		C (m)	D (m)
SL122/J215M			
SL121/J135	SL122/J215M	4,07	6,74
	SL121/J135	4	6,81
SL121/S215M	SL121/S215M	4,07	6,74



Igo 28 A

	F	D	GB	E	I	P
○	Chantier	Baustelle	Site	Obra	Cantiere	Estaleiro



ARCOMET

Industrieweg 139 - 3583 Paal-Beringen - BELGIUM - T +32 (0)11 450 950 - EMAIL arcomet@arcomet.com - www.arcomet.com

POTAIN