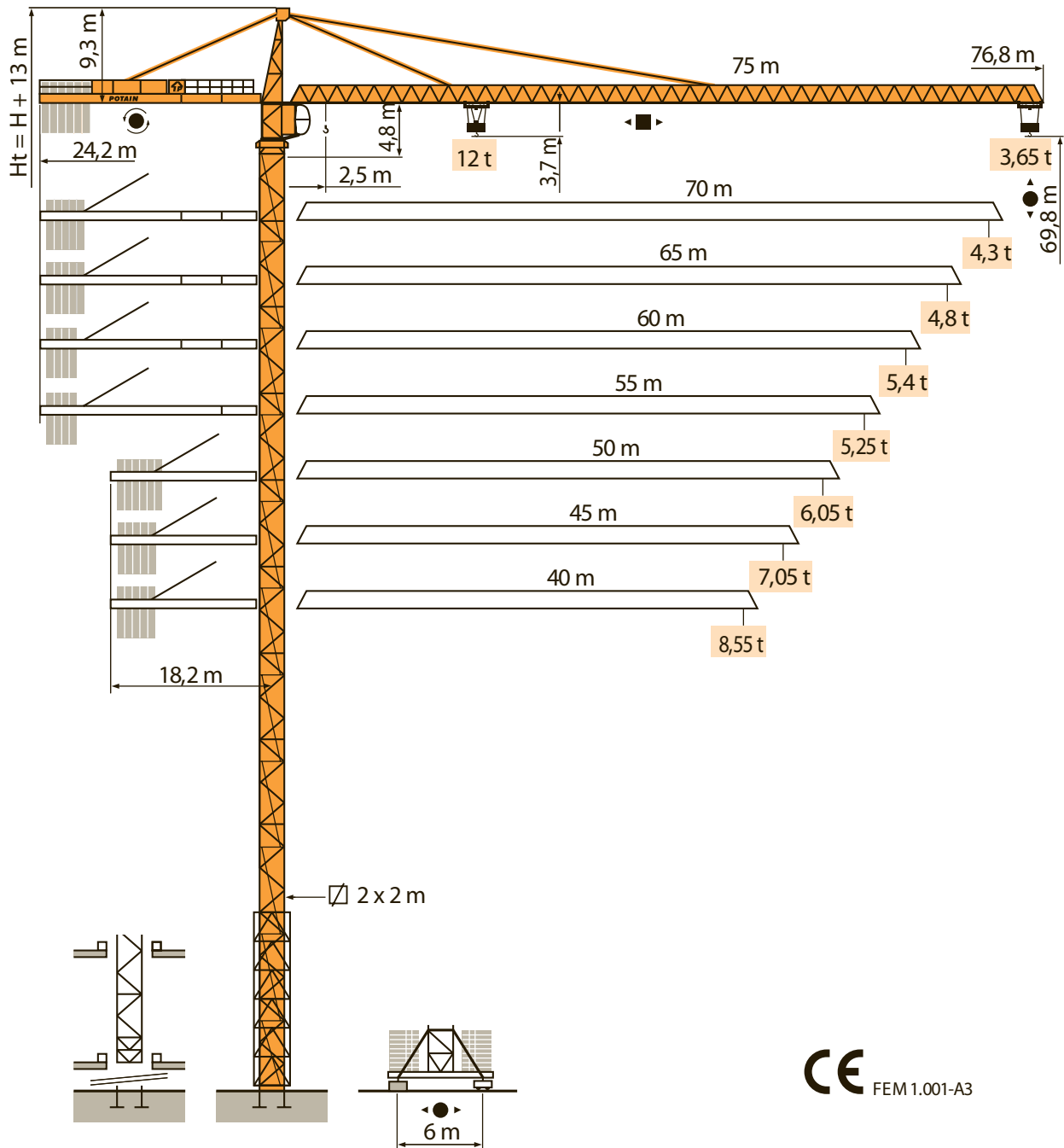
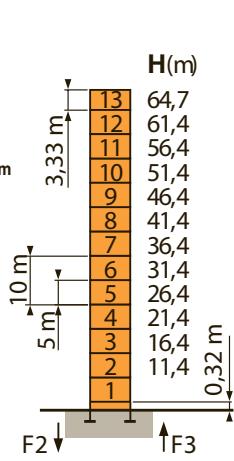


MD 365 B L12

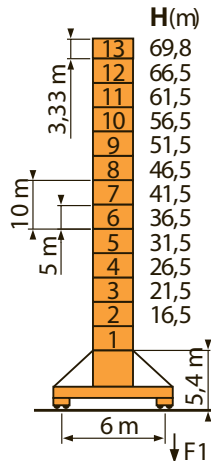


CE FEM 1.001-A3

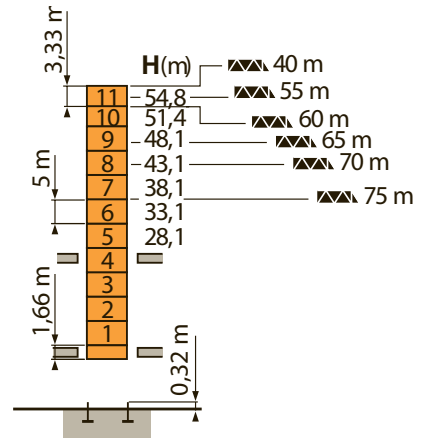
Mat / Réactions □ 2 m
 Maste / Eckdrücke ▴ 40 m → 75 m
 Masts / Reactions
 Mástil / Reacciones
 Torre / Reazioni
 Tramo / Reações



P 60 A	
F2	● 201 t
	■ 200 t
F3	● 140 t
	■ 140 t
	▴ 99 t

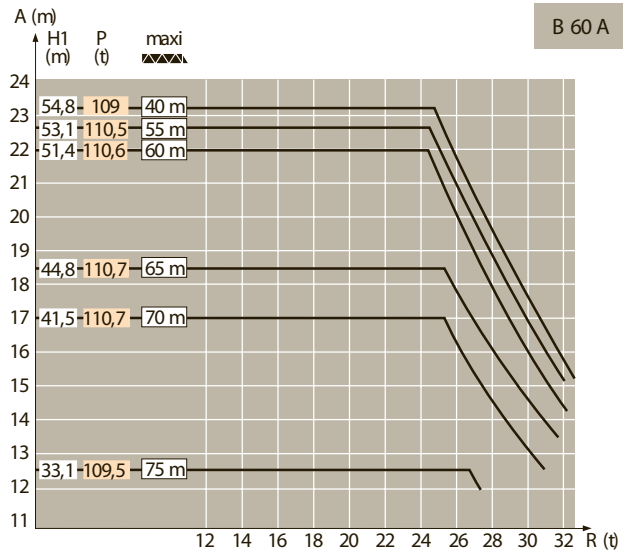
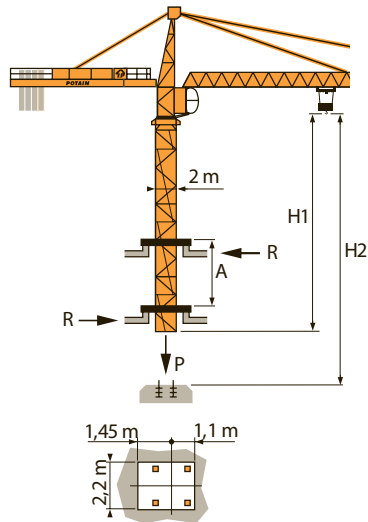


V 60 A	
F1	● 126 t
	■ 128 t
	▴ 111 t



B 60 A	
	▴ 40 m
	▴ 55 m
	▴ 60 m
	▴ 65 m
	▴ 70 m
	▴ 75 m

Téles copage sur dalles
 Kletterkrane im Gebäude
 Climbing crane
 Teles copage gruas trepadoras
 Gru in cavedio
 Teles copagem sobre lages



F	D	GB	E	I	P
● Réactions en service	Reaktionskräfte in Betrieb	Reactions in service	Reacciones en servicio	Reazioni in servizio	Reações em serviço
■ Réactions hors service	Reaktionskräfte außer Betrieb	Reactions out of service	Reacciones fuera de servicio	Reazioni fuori servizio	Reações fora de serviço
▴ A vide sans lest (ni train de transport) avec flèche et hauteur maximum.	Ohne Last, Ballast (und Transportachse), mit Maximalausleger und Maximalhöhe.	Without load, ballast (or transport axes), with maximum jib and maximum height.	Sin carga, sin lastre, (ni tren de transporte), flecha y altura máxima.	A vuoto, senza zavorra (ne assali di trasporto) con braccio massimo e altezza massima.	Sem carga (nem trem de transporte)- sem lastro com lança e altura máximas.
i Nous consulter	Auf Anfrage	Consult us	Consultarnos	Consultateci	Consultar-nos

Courbes de charges

Lastkurven

Load diagrams

Curvas de cargas

Curve di carico

Curva de cargas

75 m	2,5 ▶	25,7	27	30	32	35	37	40	42	44,3	50,3	52	55	57	60	62	65	67	70	72	75 m
▲▲▲		12	11,3	9,9	9,2	8,2	7,6	6,9	6,4	6	6	5,8	5,4	5,2	4,8	4,7	4,4	4,2	4	3,8	3,65 t

70 m	2,5 ▶	27,2	30	32	35	37	40	42	45	47,1	53,2	55	57	60	62	65	67	70 m
▲▲▲		12	10,6	9,8	8,8	8,2	7,4	7	6,4	6	6	5,8	5,5	5,2	5	4,7	4,5	4,3 t

65 m	2,5 ▶	27,5	30	32	35	37	40	42	45	48,2	53,8	55	57	60	62	65 m
▲▲▲		12	10,8	10	9	8,4	7,6	7,2	6,6	6	6	5,9	5,6	5,3	5,1	4,8 t

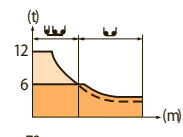
60 m	2,5 ▶	28	30	32	35	37	40	42	45	47	49,1	54,9	57	60 m
▲▲▲		12	11,1	10,2	9,2	8,6	7,8	7,3	6,7	6,3	6	6	5,7	5,4 t

55 m	2,5 ▶	28,4	30	32	35	37	40	42	45	47	50	52	55 m
▲▲▲		12	11,2	10,4	9,3	8,7	7,9	7,5	6,8	6,5	6	5,7	5,25 t

50 m	2,5 ▶	28,7	30	32	35	37	40	42	45	47	50 m
▲▲▲		12	11,4	10,5	9,5	8,8	8	7,6	7	6,6	6,05 t

45 m	2,5 ▶	29,1	30	32	35	37	40	42	45 m
▲▲▲		12	11,6	10,7	9,6	9	8,2	7,7	7,05 t

40 m	2,5 ▶	30,2	32	35	37	40 m
▲▲▲		12	11,2	10,1	9,4	8,55 t



75 m - 70 m : - - - = -0,950 t
40 m - 65 m : - - - = -0,850 t

75 m	2,7 ▶	26,1	27	30	32	35	37	40	42	45	45,4	46,8	50	52	55	57	60	62	65	67	70	72	75 m
▲▲▲		12	11,5	10,1	9,4	8,4	7,8	7,1	6,6	6,1	6	6	5,5	5,2	4,8	4,6	4,3	4,1	3,8	3,7	3,4	3,3	3,1 t

70 m	2,7 ▶	27,6	30	32	35	37	40	42	45	47	48,3	49,8	52	55	57	60	62	65	67	70 m
▲▲▲		12	10,9	10	9	8,4	7,6	7,2	6,6	6,2	6	6	5,7	5,3	5	4,7	4,5	4,2	4	3,8 t

65 m	2,7 ▶	27,7	30	32	35	37	40	42	45	47	48,8	50,3	52	55	57	60	62	65 m
▲▲▲		12	10,9	10,1	9,1	8,5	7,7	7,3	6,7	6,3	6	6	5,8	5,4	5,1	4,8	4,6	4,3 t

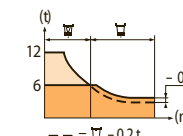
60 m	2,7 ▶	28,4	30	32	35	37	40	42	45	47	50,3	51,9	52	55	57	60 m
▲▲▲		12	11,3	10,4	9,4	8,8	8	7,5	6,9	6,5	6	6	5,6	5,3	5 t	

55 m	2,7 ▶	28,9	30	32	35	37	40	42	45	47	50	51,2	52,8	55 m
▲▲▲		12	11,5	10,6	9,6	9	8,2	7,7	7,1	6,7	6,2	6	6	5,7 t

50 m	2,7 ▶	29,1	30	32	35	37	40	42	45	47	50 m
▲▲▲		12	11,6	10,8	9,7	9,1	8,2	7,8	7,1	6,8	6,25 t

45 m	2,7 ▶	29,5	30	32	35	37	40	42	45 m
▲▲▲		12	11,8	10,9	9,8	9,2	8,4	7,9	7,25 t

40 m	2,7 ▶	30,6	32	35	37	40 m
▲▲▲		12	11,4	10,3	9,6	8,75 t



- - - = -0,2 t

Lest de contre-flèche

Gegenauslegerballast

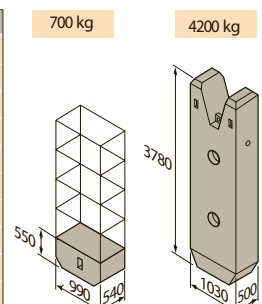
Counter-jib ballast

Lastre de contra flecha

Contrappeso

Lastros da contra lança

		50 LVF - 75 LVF - 100 LVF			150 LCC		
		4200 kg	700 kg	▲▲▲ (kg)	4200 kg	700 kg	▲▲▲ (kg)
75 m	24,2 m	5	4	23 800	5	2	22 400
70 m	24,2 m	5	-	21 000	4	3	18 900
65 m	24,2 m	4	4	19 600	4	1	17 500
60 m	24,2 m	4	-	16 800	3	3	14 700
55 m	24,2 m	3	5	16 100	3	2	14 000
50 m (B60A)	24,2 m	3	3	14 700	3	-	12 600
50 m	18,2 m	5	5	24 500	5	3	23 100
45 m	18,2 m	5	1	21 700	4	4	19 600
40 m	18,2 m	4	3	18 900	4	-	16 800



Lest de base - Grundballast

Base ballast - Lastre de base

Zavorra di base - Lastros da base

□ 2 m	V 60 A	H (m)	69,8	66,5	61,5	56,5	51,5	46,5	41,5	36,5	31,5	26,5	21,5	16,5
▲▲▲		(t)	108	108	108	108	108	108	96	96	96	96	84	84

Ancrages

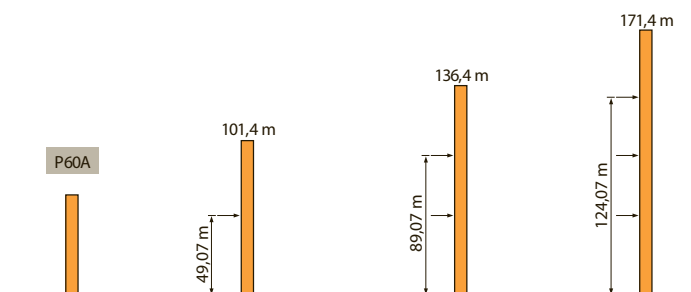
Verankerungen

Anchorage

Anclaje

Ancoraggio





Ancoragem

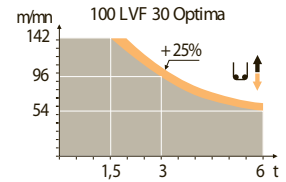
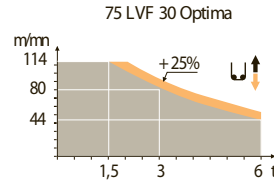
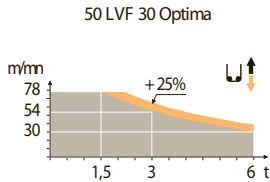









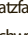





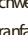

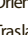




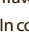







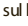

	F	D	GB	E	I	P
A	Distance entre cadres	Abstand zwischen den Rahmen	Distance between collars	Distancia entra marcos	Distanza fra i telai	Distância entre quadros
H1	Hauteur grue	Kranhöhe	Crane height	Altura grúa	Altezza gru	Altura da grua
P	Poids de la grue(en service)	Krangewicht (in Betrieb)	Crane weight (in service)	Peso de la grúa (en servicio)	Peso della gru (in servizio)	Peso da grua (em serviço)
R	Réaction horizontale	Horizontalkräfte	Horizontal reaction	Reaccion horizontal	Reazione orizzontale	Reacção horizontal
👁️	Voir télescopage sur dalles	Siehe Kletterkrane im Gebäude	See climbing crane	Veja grua trepadora	Consultare gru in cavedio	Ver telescopagem sobre lages

MD 365 B L12

Mécanismes
Antriebe
Mechanismos
Meccanismi
Mecanismos

		U ↑						UU ↑						ch - PS hp	kW								
▲	50 LVF 30 Optima	m/min	2,4	9,6	30	38	54	78	1,2	4,8	15	19	27	39	50	37	340 m						
	t	6	6	6	4,5	3	1,5	12	12	12	9	6	3										
	75 LVF 30 Optima	m/min	0	→	44	→	56	→	80	→	114	0	→	22	→	28	→	40	→	57	75	55	570 m
	t	6		4,5		3		1,5		12		9		6		3							
100 LVF 30 Optima	m/min	0	→	54	→	68	→	96	→	142	0	→	27	→	34	→	48	→	71	100	75	1019 m	
t	6		4,5		3		1,5		12		9		6		3								
▲	150 LCC 30	m/min	86	→	103	→	129	→	172	→	206	43	→	52	→	65	→	86	→	103	150	110	652 m
	t	6	4,5	3	1,5	0,75	12	9	6	3	1,5												
◀ ▶	6 DVF 4	m/min	0 → 50 (12 t) 0 → 100 (6 t) 0 → 120 (3 t)									5,5	4										
	RVF 182 Optima	tr/min U/min rpm	0 → 0,7									2 x 12	2 x 9										
●	V 60 A RT 544 A1 2V R ≥ 13 m	m/min	13,5 - 27									4 x 7	4 x 5,2										
CEI 38  IEC 38		kVA																					
400 V (+6% -10%) 50 Hz		50 LVF : 75 kVA 75 LVF : 100 kVA 100 LVF : 125 kVA 150 LCC : 175 kVA										2000/14											



F	D	GB	E	I	P
					
Leverage	Heben	Hoisting	Elevación	Sollevamento	Elevação
					
Distribution	Katzfahren	Trolleying	Distribución	Distribuzione	Distribuição
					
Orientation	Schwenken	Slewing	Orientación	Rotazione	Rotação
					
Translation	Kranfahren	Travelling	Traslación	Traslazione	Translação
					
Conforme aux directives CEE sur le niveau acoustique	Gemäss EWG-Richtlinien für den Schall-Leistungspegel	In compliance with the EEC Instructions on noise level	Conforme con las directivas CEE sobre el nivel acustico	Conforme alle direttive CEE sul livello acustico	Conforme as directivas CEE sobre o nível acústico



ARCOMET

Industrieweg 139 - 3583 Paal-Beringen - BELGIUM - T +32 (0)11 450 950 - EMAIL arcomet@arcomet.com - www.arcomet.com

POTAIN 