

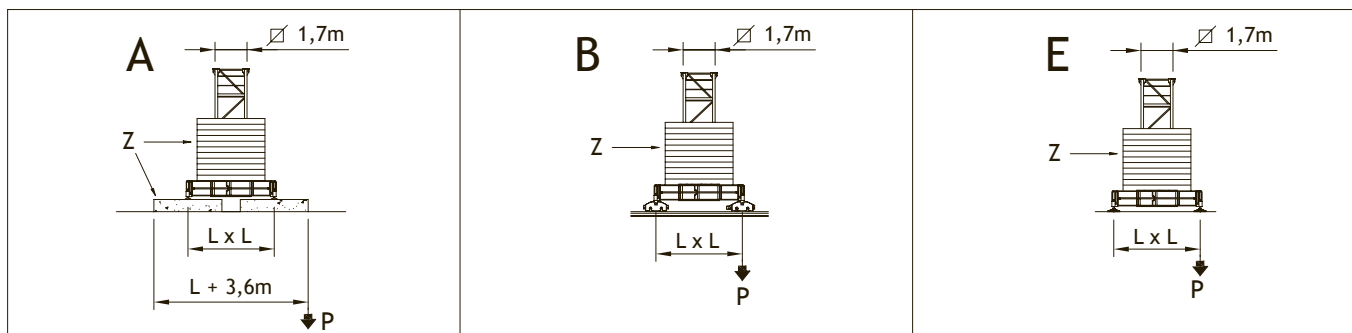
VLUCHT & CAPACITEIT  
 RAGGI E PORTATE  
 RADIUS AND S.W.L.  
 PORTEE ET CHARGE UTILE  
 AUSLADUNG UND TRAGFAHIGKEIT

Max. Capaciteit Portata max / Max s.w.l. Charge maxi / Max. Tragfähigkeit		8000 kg.  / 4000 kg.								10000 kg.  / 5000 kg.							
Giek Braccio / Jib Ausleger / Flèche	m.	33	37	43	50	56	60	66	33	37	43	50	56	60	66		
Max. Capaciteit van Campo di portata max da Max s.w.l. range from Charge maxi de Max. Tragfähigkeit von	2,8 m a to à bis	24,60	24,07	23,61	23,20	21,85	21,36	20,47	20,39	19,85	19,16	18,61	18,00	17,36	16,65		
Vlucht (m.) Sbraccio (m.) Radius (m.) Portée (m.) Ausladung (m.)		16	8000	8000	8000	8000	8000	8000	8000	10000	10000	10000	10000	10000	10000	10000	
		18	8000	8000	8000	8000	8000	8000	8000	10000	10000	10000	10000	10000	9588	9136	
		20	8000	8000	8000	8000	8000	8000	8000	10000	9916	9518	9202	8856	8485	8080	
		22	8000	8000	8000	8000	7937	7731	7363	9165	8886	8526	8240	7927	7591	7224	
		24	8000	8000	7851	7695	7182	6993	6657	8290	8035	7706	7445	7159	6852	6517	
		26	7511	7323	7162	7018	6546	6373	6063	7554	7319	7016	6776	6513	6231	5922	
		28	6898	6724	6575	6442	6005	5844	5557	6927	6709	6428	6206	5962	5701	5415	
		30	6369	6207	6069	5945	5538	5388	5121	6385	6183	5921	5714	5487	5244	4978	
		32	5909	5757	5628	5511	5131	4991	4741	5914	5724	5480	5286	5073	4846	4597	
		33	5700	5553	5428	5315	4946	4810	4568	5700	5516	5279	5092	4886	4665	4424	
	36		5011	4896	4793	4455	4331	4110		4964	4747	4575	4387	4185	3965		
	37		4850	4738	4638	4310	4189	3974		4800	4589	4422	4239	4043	3829		
	40				4314	4221	3918	3807	3608			4164	4010	3841	3660	3462	
	42				4065	3977	3689	3583	3394			3916	3769	3608	3436	3247	
	43				3950	3864	3583	3479	3295			3800	3657	3500	3332	3148	
	46					3554	3292	3195	3023				3350	3204	3047	2875	
	48					3370	3118	3026	2861				3168	3027	2877	2713	
	50					3200	2959	2870	2712				3000	2865	2721	2564	
	52						2812	2727	2575					2716	2577	2426	
	54						2676	2594	2448					2578	2445	2299	
56						2550	2471	2330					2450	2321	2181		
58							2357	2221						2207	2071		
60							2250	2118						2100	1969		
62								2023							1873		
64								1934							1784		
66								1850							1700		
Enkele inschering Solo tiro semplice Two reeving only Mouflage à deux brins seulement Nur zwei-stränge		+100 Kg.								150 Kg.							

GIEK & GIEKBALLAST  
 BRACCIO E CONTRAPESO  
 JIB AND COUNTERWEIGHT  
 FLECHE ET CONTREPOID  
 AUSLEGER UND GEGENGEWICHTSBALLAST

Giek Braccio / Jib Ausleger / Flèche	(m)	33	37	43	50	56	60	66
Giekbballast Contrappeso / Counterweight Contrepoid / Gegengewicht	(t)	11,545	13,145	14,745	17,28	19,815	21,415	25,55
Samenstelling Composizione Composition Komposition	Type / Tipo	Aantal / Quantità / Quantity / Nombre / Anzahl						
	A 183	2	2	2	2	2	2	2
	B 183	1	1	1	2	3	3	4
	C 183	-	1	2	2	2	3	4

HAAKHOOGTE, MAX BASISBALLAST EN HOEKDRUK  
 ALTEZZA SOTTO-GANCIO, ZAVORRA DI BASE, REAZIONI  
 H.U.H., MAX. BASE BALLAST AND CORNER PRESSURE  
 H.S.C., LEST DE BASE MAXI ET REACTIONS  
 HAKENHOHEN, MAXIMALE ZENTRALBALLASTE UND ECKKRAFT



OP CHASSIS / SU BASE / ON UNDERCARRIAGE  
 SUR CHASSIS / AUF UNTENWAGEN

L = 4,5 m

H (m)	max. Z (t)	max. P (kN)	H (m)	max. Z (t)	max. P (kN)	H (m)	max. Z (t)	max. P (kN)
20,3	68,48	579	19,8	65,7	571	19,5	67,7	559
26,2	68,48	609	25,7	65,7	600	25,4	67,7	590
32,1	68,48	643	31,6	65,7	634	31,3	67,7	626
38,0	68,48	684	37,5	67,0	673	37,2	69	666
43,9	80,08	735	43,4	74	720	43,1	76	713
46,8	85,88	840	46,3	81,5	821	46,0	83,5	816

L = 6 m

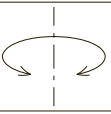
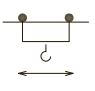
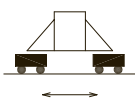
H (m)	max. Z (t)	max. P (kN)	H (m)	max. Z (t)	max. P (kN)	H (m)	max. Z (t)	max. P (kN)
20,3	43	467	19,8	41	455	19,5	43	445
26,2	43	488	25,7	41	478	25,4	43	470
32,1	43	513	31,6	41	505	31,3	43	498
38,0	45,3	543	37,5	46,4	536	37,2	46,4	530
43,9	51,1	581	43,4	52,2	574	43,1	52,2	571
46,8	62,7	655	46,3	63,8	648	46,0	63,8	64,4

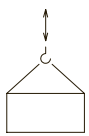


OP INSTORTVOET / SU PLINTO / ON FOUNDATION ANCHORS  
 SUR PIEDS DE SCHELEMENT / AUF FUNDAMENTANKER

	H (m)	18,6	24,5	30,4	36,3	42,2	45,1
	T (kN)	585	642	710	793	891	946
	P (kN)	831	899	979	1073	1183	1276
	q max. (Kg/cm <sup>2</sup> )	1,17	1,26	1,38	1,53	1,73	1,95

	H (m)	49,5
	T (kN)	1043
	P (kN)	1382
	q max. (Kg/cm <sup>2</sup> )	1,357

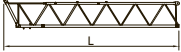
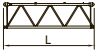

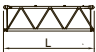
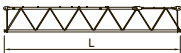



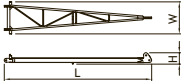


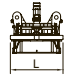
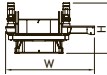

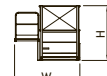


		Snelheid Velocità / Speed / Vitesse / Geschwindigkeit	Vermogen Potenza / Power / Puissance / Leistung
Zwenken Rotazione Slewing Orientation Schwenken		0,26 / 048 / 07 min <sup>-1</sup>	2 x 4,8 Kw
Loopkat Carrello Trolley Chariot Katzfahnen		27 / 54 m/min	5,5 Kw
		18,8 / 35,2 / 54 m/min Progressivo - Progressive	5,5 Kw
Spoor Traslazione Rail Translation Kranfahren		20 m/min	2 x 4 Kw

Hijster Argano Winch Treuril Hubwerk		Stap Marcia Step Vitesse Gang	Gewicht / Snelheid - Carico / velocità - Load / Speed Charge / Vitesse - Tragfähigkeit / Geschwindigkeit		
					
Type Tipo Type Type Typ	33 HP 24,3 Kw - 8VF INVERTER	1	4000 Kg - 5,6 m/min	8000 Kg - 2,8 m/min	
		2	4000 Kg - 28 m/min	8000 Kg - 14 m/min	
		3	2000 Kg - 56 m/min	4000 Kg - 28 m/min	
			1300 Kg - 67 m/min	2600 Kg - 33,6 m/min	
		50 HP 37 Kw - 8VF INVERTER	1	4000 Kg - 9 m/min	8000 Kg - 5 m/min
			2	4000 Kg - 28 m/min	8000 Kg - 14 m/min
	3		4000 Kg - 45 m/min	4000 Kg - 23 m/min	
	4		2509 Kg - 75 m/min	4689 Kg - 38 m/min	
	5		1907 Kg - 98 m/min	3516 Kg - 49 m/min	
	33 HP 24,3 Kw - 10	1	5000 Kg - 5,7 m/min	10000 Kg - 2,8 m/min	
		2	5000 Kg - 23 m/min	10000 Kg - 11,5 m/min	
		3	2500 Kg - 46 m/min	5000 Kg - 23 m/min	
	33 HP 24,3 Kw - 10VF INVERTER	1	5000 Kg - 5,7 m/min	10000 Kg - 2,8 m/min	
		2	5000 Kg - 23 m/min	10000 Kg - 11,5 m/min	
		3	2500 Kg - 46 m/min	5000 Kg - 23 m/min	
		4	1800 Kg - 54 m/min	3600 Kg - 27 m/min	
	50 HP 37 Kw - 10VF INVERTER	1	5000 Kg - 3 m/min	10000 Kg - 1,5 m/min	
		2	5000 Kg - 16 m/min	10000 Kg - 8 m/min	
		3	5000 Kg - 32 m/min	10000 Kg - 16 m/min	
		4	3000 Kg - 50 m/min	6600 Kg - 25 m/min	
5		2100 Kg - 68 m/min	4600 Kg - 34 m/min		

Conforme alla direttiva CEE 84/534 sul livello acustico - In compliance with the EEC 84/534 instruction on noise level - Conforme à directive CEE 84/534 sur le niveau acoustique  
 Gemässe EWG 84/534 über Schall - Leistungspegel - Conforme con la direttiva CEE 84/534 sobre el nivel acustico.

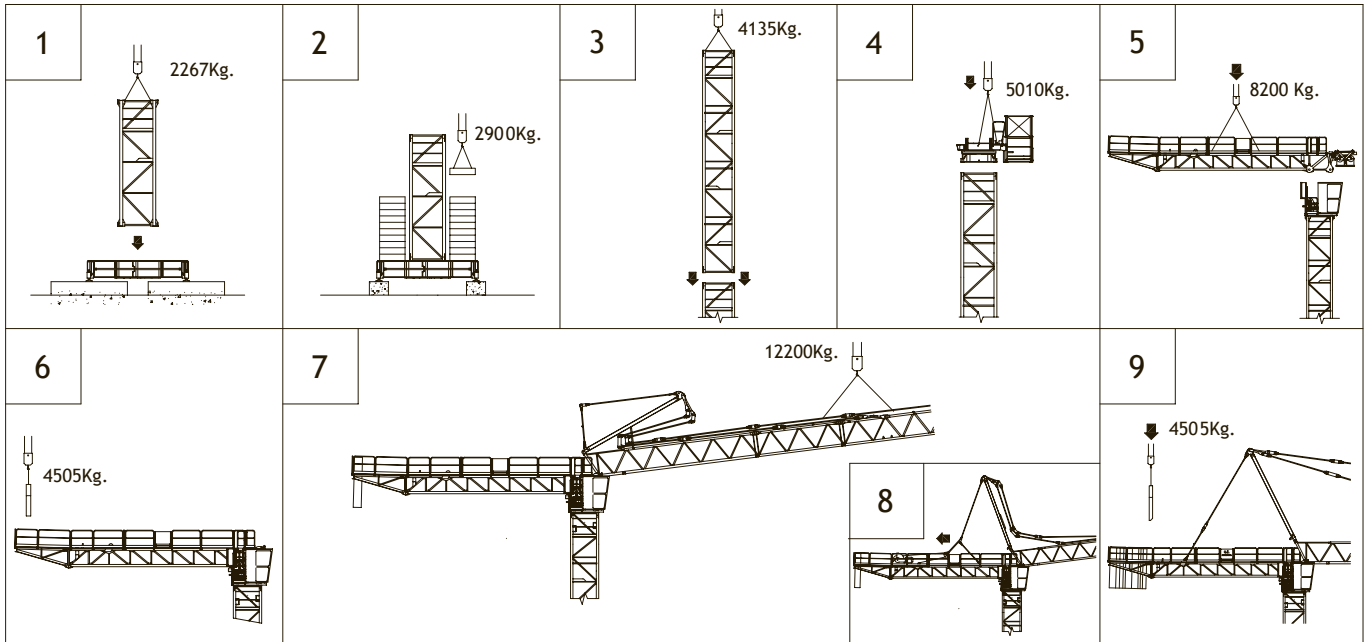
TOTAAL MOTOR VERMOGEN FORZA MOTRICE TOTALE TOTAL INSTALLED POWER PUISSANCE TOTALE DES MOTEURS GESAMT-MOTORENLEISTUNG	24,3 Kw (33HP)	37 Kw (50HP)
	48 Kw	60 Kw

PAKLIJS I  
 LISTA DEI PESI / PACKING LIST  
 LISTE DE COLISAGE / KOLLI-LISTE

Pos. Item	Stuk Pezzi Pieces	Omschrijving Denominazione Description	Schets Schizzo Sketch	Afmetingen Dimensioni, Dimensions			Gewicht (kg.) Peso, Weight		
				L	W	H	Unit.	Total.	
1	1	Giekdeel Elemento di freccia Jib element Élément de flèche Ausleger	N°1 	11,650	1,500	1,990	1712	1712	
	1		N°2 	6,010	1,500	1,675	705	705	
	1		N°3 	11,770	1,500	1,675	1405	1405	
	2		N°4A -4B 	6,010	1,500	1,675	660	1320	
	1		N°5 	11,775	1,500	1,685	1261	1261	
	1		N°6 	11,790	1,500	1,685	1023	1023	
	1		N°7 	4,110	1,500	1,685	374	374	
	1	Giekpunt Puntale freccia, Jib point, Élément pointe, Spitzelement 	1,300	1,530	1,725	90	90		
2	1	Giektoren Cuspide, A frame Pointe, Turmspitze 	7,820	1,700	0,530	720	720		
3	1	Tegengiek, hijslierwerk, telekast, loopkat Controfreccia, argano sollev.,quadro elettrico, carrello freccia. Counterjib, hoisting winch, trolley jib, electrical box. Contreflèche tournante,treuil de levage, chariot de flèche, armoire électrique. Gegenausleger, Hubwinde, Laufkatze, Schaltschrank.		13,350 (L1) 11,950	2,605	2,400	7400 6550	7400 6550	
	1	Tegengiek, hijslierwerk, telekast, loopkat, draagstuk Controfreccia, argano sollev.,quadro elettrico, carrello freccia, porta-blocchi Counterjib, hoisting winch, trolley jib, electrical box, element for counterweight Contrefl., treuil de levage chariot de flèche armoire électrique, element terminal Gegenausleger, Hubwinde, Laufkatze, Schaltschrank, Gegengewichtselement		16,480	2,605	2,400	8200	8200	
4	1	draaitafel Gruppo girevole slewing table Table tournante Drehgruppe 		1,900	3,200	1,900	4150	4150	
5	1	kabine met toegangsbordes Ballatoio cabina, cabina Access balcony, cabin Porte cabine Wartung plattform 		2,470	3,530	2,190	861	861	
6	2	Tegengewichtsblok Blocchi di contrappeso Counterweight block Contre-poids Gegengewichtsboecke 		A183	1,670	0,480	2,810	4505	9010
	B183			1,670	0,270	2,810	2535	10140	
	C183			1,670	0,170	2,810	1600	6400	

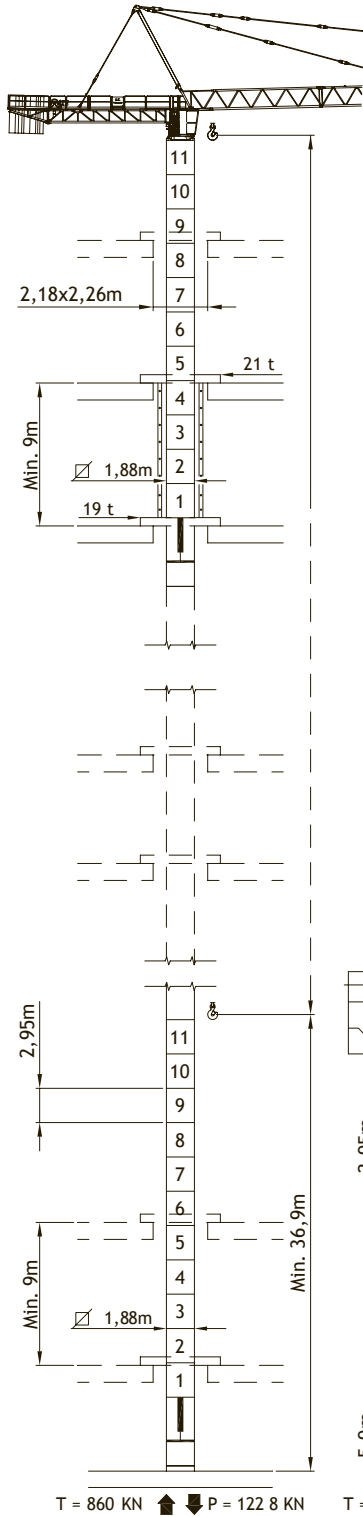
Pos. Item	Stuk Pezzi Pieces	Omschrijving Denominazione Description	Schets Schizzo Sketch	Afmetingen Dimensioni Dimensions			Gewicht Peso Weight (kg.)		
				L	W	H	Unit.	Total.	
7	-			2,950	1,900	1,700	1335	1335	
8	-	Torelement Elemento di torre Tower element Élément de mature Turmstück		5,900	1,900	1,700	2267	2267	
9	-			11,800	1,900	1,700	4135	4135	
10	1	Instortstuk Tronchetto di fondazione Expendable foundation element Élément a sceller Fundamentanker		1,465	1,980	1,980	830	830	
11	1	Hoofdligger van de kruisbasis Trave principale della crociera di base Base main beam Poutre de chassiss de base Hauptträger für Kreuzgelenk		6,0 x 6,0	8,645	0,780	0,960	3475	3475
				4,5 x 4,5	6,524	0,780	0,960	2595	2595
12	2	Halveligger van de kruisbasis Semitrave della crociera di base Half base beam Semipoutre de chassiss de base Halbträger für Kreuzgelenk		6,0 x 6,0	4,323	0,680	0,974	1745	3490
				4,5 x 4,5	3,212	0,680	0,974	1235	2470
13	4	Afstempelblok Blocco di appoggio Concrete pad Sabot en béton Betonfuss (B5)		3,600	0,900	0,750	5520	22080	
14	2	Meelopend spoorwiel Bilancino traslazione folle Driven bogie Boggie fou Fahrschemel ohne motorantrieb		1,315	0,222	0,540	600	1200	
15	2	Aangedreven spoorwiel Bilancino traslazione motorizzato Driving bogie Boggie motorisée Fahrschemel mit motorantrieb		1,427	0,492	0,540	765	1530	
16	29	Basisballastblok Blocco di zavorra Base ballast block Lest de base Grundballastblöcken (GB3)		3,600	1,200	0,300	2900	84100	

MONTAGE CYCLUS  
SEQUENZA DI MONTAGGIO  
ASSEMBLING SEQUENCE  
SEQUENCE DE MONTAGE  
AUFSTELLUNG SEQUENZ



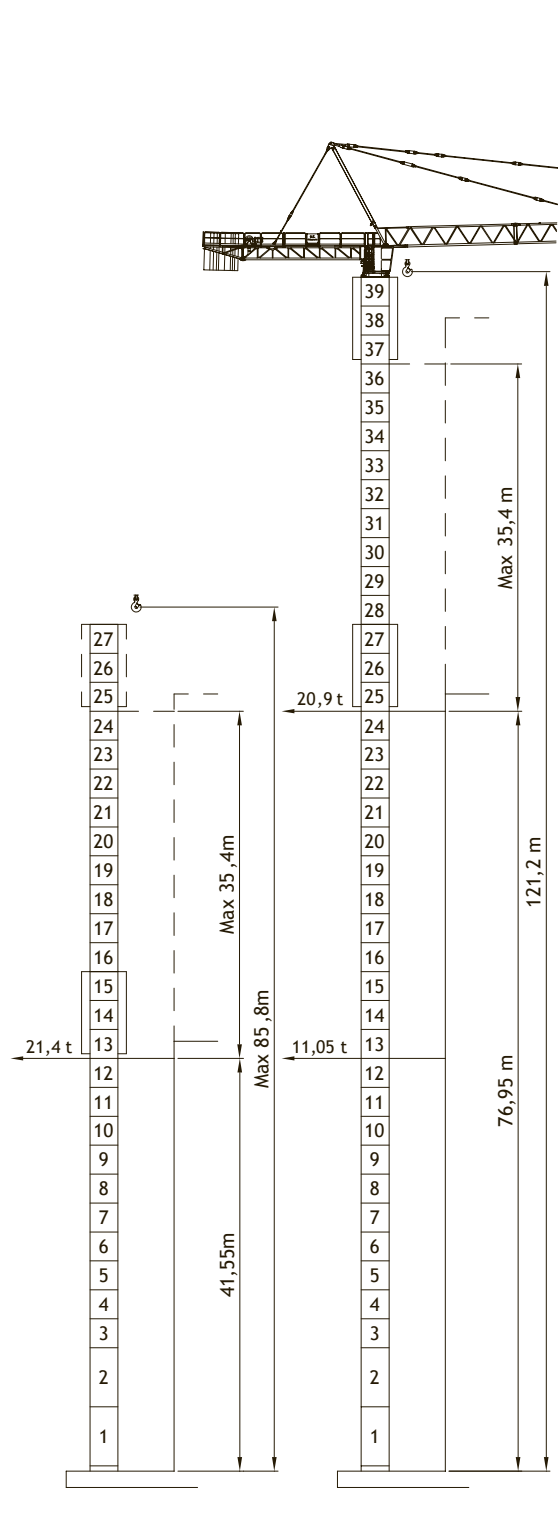
# MR 185 RI

INTERNE KLIMRAAM  
RAMPANTE  
FLOOR CLIMBING  
TELESCOPABLE SUR DALLES  
KLETTERKRANE IM GEBAUDE



# MR 185 HC4

EXTERNE KLIMRAAM  
A SOPRALZO IDRAULICO  
EXTERNAL CLIMBING  
TELESCOPABLE  
KLETTERKRANE





**ARCOMET**

Industrieweg 139 - 3583 Paal-Beringen - BELGIUM - T +32 (0)11 450 950 - EMAIL [arcomet@arcomet.com](mailto:arcomet@arcomet.com) - [www.arcomet.com](http://www.arcomet.com)

