

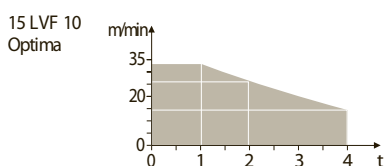
Igo 32

	F Chariot distributeur Chariot distributeur et courbes de charges Réactions en service Réactions hors service A vide sans lest (ni train de transport) avec flèche et hauteur maximum.		D Verfahrbare Laufkatze Verfahrbare Laufkatze und Lastkurven Reaktionskräfte in Betrieb Reaktionskräfte außer Betrieb Ohne Last, Ballast (und Transportachse), mit Maximalausleger und Maximalhöhe.		GB Traversing trolley Traversing trolley and load diagrams Reactions in service Reactions out of service Without load, ballast (or transport axes), with maximum jib and maximum height.		E Carro distribuidor Carro distribuidor y curvas de cargas Reacciones en servicio Reacciones fuera de servicio Sin carga, sin lastre, (ni tren de transporte), flecha y altura máxima.		I Carrellino distributore Carrellino distributore e curve di carico Reazioni in servizio Reazioni fuori servizio A vuoto, senza zavorra (ne assali di trasporto) con braccio massimo e altezza massima.		P Carro distribuidor Carro distribuidor e curva de cargas Reações em serviço Reações fora de serviço Sem carga (nem trem de transporte)- sem lastro com lança e altura máximas.
--	--------------------------------------------------------------------------------------------------------------------------------------------------------------------------------------------------------------	--	---------------------------------------------------------------------------------------------------------------------------------------------------------------------------------------------------------------------------	--	----------------------------------------------------------------------------------------------------------------------------------------------------------------------------------------------------------------	--	--------------------------------------------------------------------------------------------------------------------------------------------------------------------------------------------------------------	--	-------------------------------------------------------------------------------------------------------------------------------------------------------------------------------------------------------------------------------	--	-------------------------------------------------------------------------------------------------------------------------------------------------------------------------------------------------------

Mécanismes
Antriebe
Mechanismos
Mecanismos
Meccanismi
Mecanismos

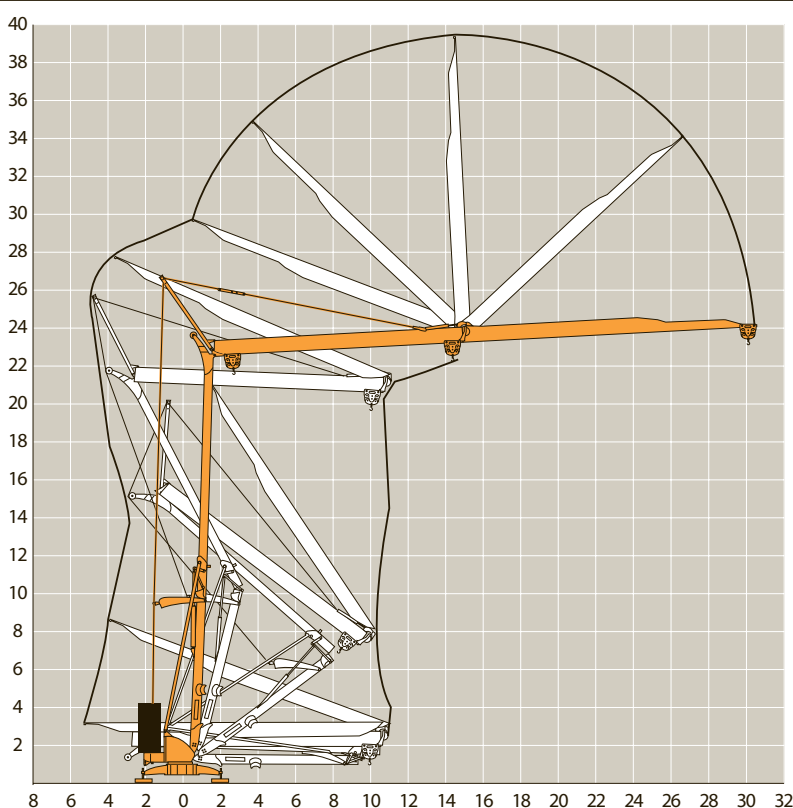
LXR 1

		⚙️					⚙️					ch-PS hp	kW	
▲ ▼	15 LVF 10 Optima	m/min	3,6	18	30	49	66						15	11
		kg	2000	2000	2000	1100	500							
		m/min	3,6	18	30	54	66	1,8	8,9	15	27	33		
		kg	2000	2000	2000	1000	500	4000	4000	4000	2000	1000		
◀▶	3 DVF5	m/min	19 - 41									3	2,2	
⦿	RVF2-30	tr/min U/min rpm	0 → 0,8									2	1,5	
CEI 38		⚡	IEC 38		kVA			🎧						
400 V (+6% -10%) 50 Hz					15 LVF 10: 20 kVA			2000/14						



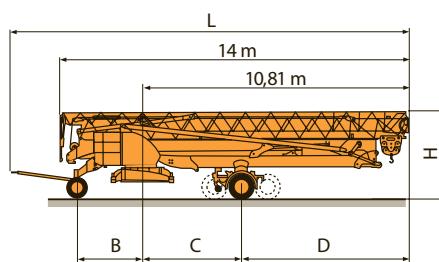
Montage
Montage
Erection
Montaje
Montaggio
Montagem

LXR 1

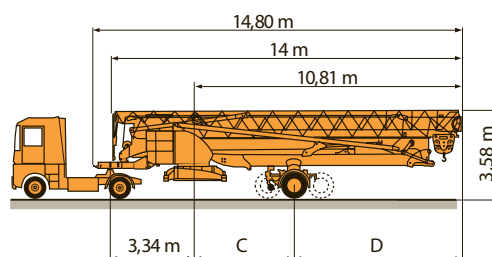


F	D	GB	E	I	P
Levage	Heben	Hoisting	Elevación	Sollevarmento	Elevação
Distribution	Katzfahren	Trolleying	Distribución	Distribuzione	Distribuição
Orientation	Schwenken	Slewing	Orientación	Rotazione	Rotação
Conforme aux directives CEE sur le niveau acoustique	Gemäss EWG-Richtlinien für den Schall-Leistungspegel	In compliance with the EEC Instructions on noise level	Conforme con las directivas CEE sobre el nivel acústico	Conforme alle direttive CEE sul livello acustico	Conforme as directivas CEE sobre o nível acústico

Transport	DS61/S120		L (m)	B (m)	C (m)	D (m)	H (m)
Transport	DS61/S125	DS61/S120	15,9	2,45	4	6,81	3,05/3,2
Transport	DJ80/S120	DS61/S125	15,9	2,45	4	6,81	3,05/3,2
Transporte	DJ80/S120	DJ80/S120	15,9	2,45	4	6,81	3,1
Trasporto	DJ80/S125	DJ80/S125	15,9	2,45	4	6,81	3,1
Transporte	DJ100/S120	DJ100/S120	16,33	2,45	4	6,81	3,1/3,23
LUR 2	DJ100/S120	DJ105/S125	16,33	2,45	4	6,81	3,1/3,23
	DJ105/S125	DJ126MS125	16,35	2,45	4	6,81	3,2
	DJ126MS125	DJ126MS215M	17,14	3,24	4,07	6,74	3,55
	DJ126MS125						
	DJ126MS215M						



		C (m)	D (m)
SL122/J215M			
SL121/J135	SL122/J215M	4,07	6,74
	SL121/J135	4	6,81
SL121/S215M	SL121/S215M	4,07	6,74



	F	D	GB	E	I	P
○	Chantier	Baustelle	Site	Obra	Cantiere	Estaleiro



Document commercial non contractuel. Pour toute information technique se référer à la notice correspondante

Unverbindliches Vertriebsdokument. Für technische Informationen, siehe die entsprechenden Anweisungen.

This commercial document is not legally binding. For any technical information, please refer to the corresponding instructions.

Documento comercial no contractual. Para cualquier información técnica, ver la noticia correspondiente.

Documento commerciale non vincolante, per tutte le informazioni tecniche fare riferimento al catalogo istruzioni

Documento comercial não contractual. Para qualquer informação técnica complementar consultar as respectivas instruções



ARCOMET

Industrieweg 139 - 3583 Paal-Beringen - BELGIUM - T +32 (0)11 450 950 - EMAIL arcomet@arcomet.com - www.arcomet.com

POTAIN