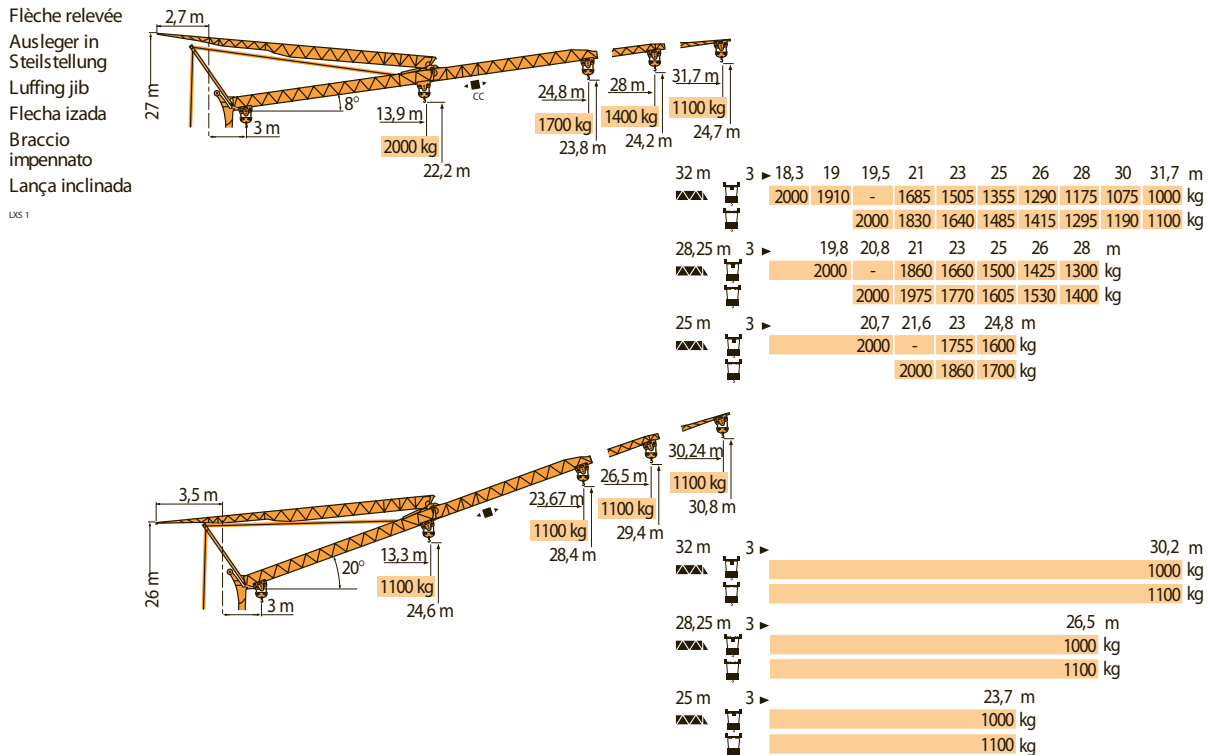









Igo 36

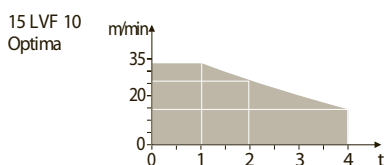


F	D	GB	E	I	P
Chariot distributeur	Verfahrbare Laufkatze	Traversing trolley	Carro distribuidor	Carrellino distributore	Carro distribuidor
Chariot distributeur et courbes de charges	Verfahrbare Laufkatze und Lastkurven	Traversing trolley and load diagrams	Carro distribuidor y curvas de cargas	Carrellino distributore e curve di carico	Carro distribuidor e curva de cargas
● Réactions en service	Reaktionskräfte in Betrieb	Reactions in service	Reacciones en servicio	Reazioni in servizio	Reações em serviço
■ Réactions hors service	Reaktionskräfte außer Betrieb	Reactions out of service	Reacciones fuera de servicio	Reazioni fuori servizio	Reações fora de serviço
A vide sans lest (ni train de transport) avec flèche et hauteur maximum	Ohne Last, Ballast (und Transportachse), mit Maximalausleger und Maximalhöhe.	Without load, ballast (or transport axles), with maximum jib and maximum height.	Sin carga, sin lastre, (ni tren de transporte), flecha y altura máxima.	A vuoto, senza zavorra (ne assali di trasporto) con braccio massimo e altezza massima.	Sem carga (nem trem de transporte) - sem lastro com lança e altura máximas.

Mécanismes
Antriebe
Mechanismos
Mecanismos
Meccanismi
Mecanismos

LX5 1

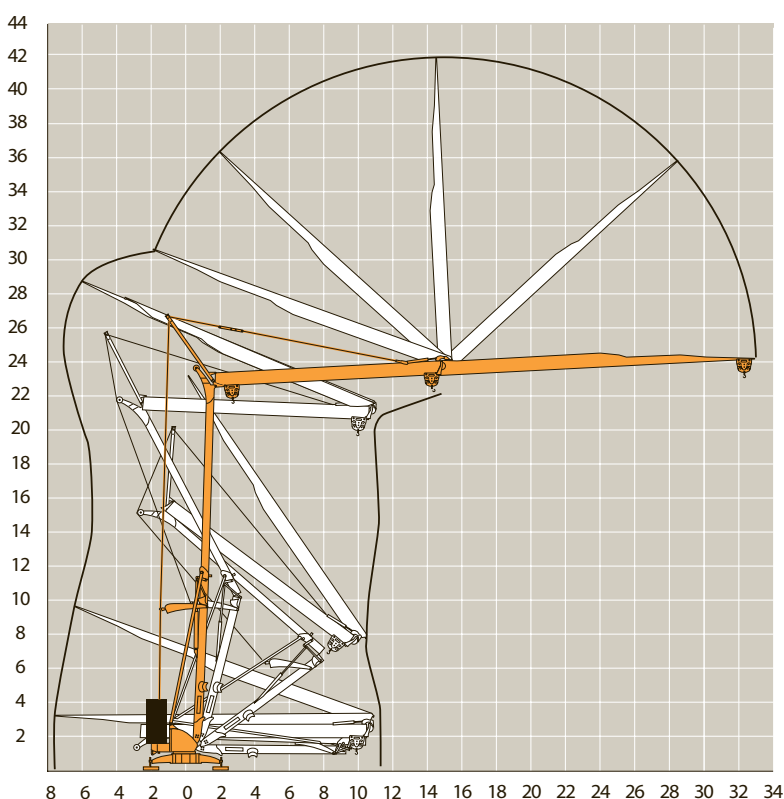
												ch - PS hp	kW	
	15 LVF 10 Optima	m/min	3,6	18	30	49	66						15	11
		kg	2000	2000	2000	1100	500							
		m/min	3,6	18	30	54	66	1,8	8,9	15	27	33		
		kg	2000	2000	2000	1000	500	4000	4000	4000	2000	1000		
	3 DVF5	m/min	19 - 41									3	2,2	
	RVF2-50	tr/min U/min rpm	0 → 0,8									4	3	
CEI 38 		IEC 38		kVA										
400 V (+6% -10%) 50 Hz		15 LVF 10: 22 kVA			2000/14									







Igo 36

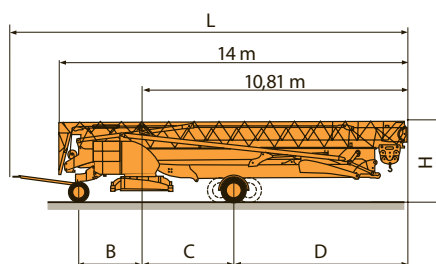
Montage
Montage
Erection
Montaje
Montaggio
Montagem

LX5 1

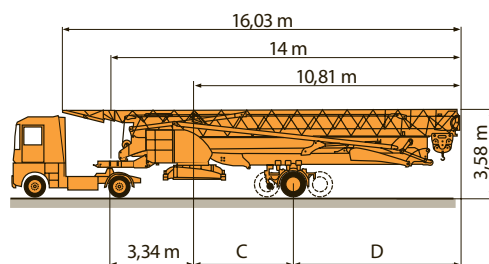


	F	D	GB	E	I	P
	Levage	Heben	Hoisting	Elevación	Sollevarmento	Elevação
	Distribucion	Katzfahren	Trolleying	Distribución	Distribuzione	Distribuição
	Orientation	Schwenken	Slewing	Orientación	Rotazione	Rotação
	Conforme aux directives CEE sur le niveau acoustique	Gemäss EWG-Richtlinien für den Schall-Leistungspegel	In compliance with the EEC Instructions on noise level	Conforme con las directivas CEE sobre el nivel acústico	Conforme alle direttive CEE sul livello acustico	Conforme as directivas CEE sobre o nível acústico

Transport	DS61/S120	○	L (m)	B (m)	C (m)	D (m)	H (m)	
Transport	DS61/S125	DS61/S120	15,9	2,45	3,73	7,08	3,05/3,2	
Transport	DS61/S125	DS61/S125	15,9	2,45	3,73	7,08	3,05/3,2	
Transporte	DJ80/S120	○	DJ80/S120	15,9	2,45	4,15	6,66	3,1
Transporte	DJ80/S125	DJ80/S125	15,9	2,45	4,15	6,66	3,1	
Transporte	DJ100/S120	DJ100/S120	16,33	2,45	4,15	6,66	3,23	
Transporte	DJ100/S120	DJ105/S125	16,33	2,45	4,15	6,66	3,23	
Transporte	DJ105/S125	DJ126MS125	16,35	2,45	4,15	6,66	3,2	
Transporte	DJ126MS125	DJ126MS215M	17,14	3,24	4,07	6,74	3,55	
Transporte	DJ126MS215M							



SL122/J215M		C (m)	D (m)
SL121/J135	SL122/J215M	4,07	6,74
SL121/S215M	SL121/J135	4	6,66
	SL121/S215M	4,07	6,74



○	F	D	GB	E	I	P
○	Chantier	Baustelle	Site	Obra	Cantiere	Estaleiro



Document commercial non contractuel. Pour toute information technique se référer à la notice correspondante

Unverbindliches Vertriebsdokument. Für technische Informationen, siehe die entsprechenden Anweisungen.

This commercial document is not legally binding. For any technical information, please refer to the corresponding instructions.

Documento comercial no contractual. Para cualquier información técnica, ver la noticia correspondiente.

Documento commerciale non vincolante, per tutte le informazioni tecniche fare riferimento al catalogo istruzioni

Documento comercial não contractual. Para qualquer informação técnica complementar consultar as respectivas instruções



ARCOMET

Industrieweg 139 - 3583 Paal-Beringen - BELGIUM - T +32 (0)11 450 950 - EMAIL arcomet@arcomet.com - www.arcomet.com

POTAIN IGO 36 - 02 - © ARCOMET 2009

POTAIN