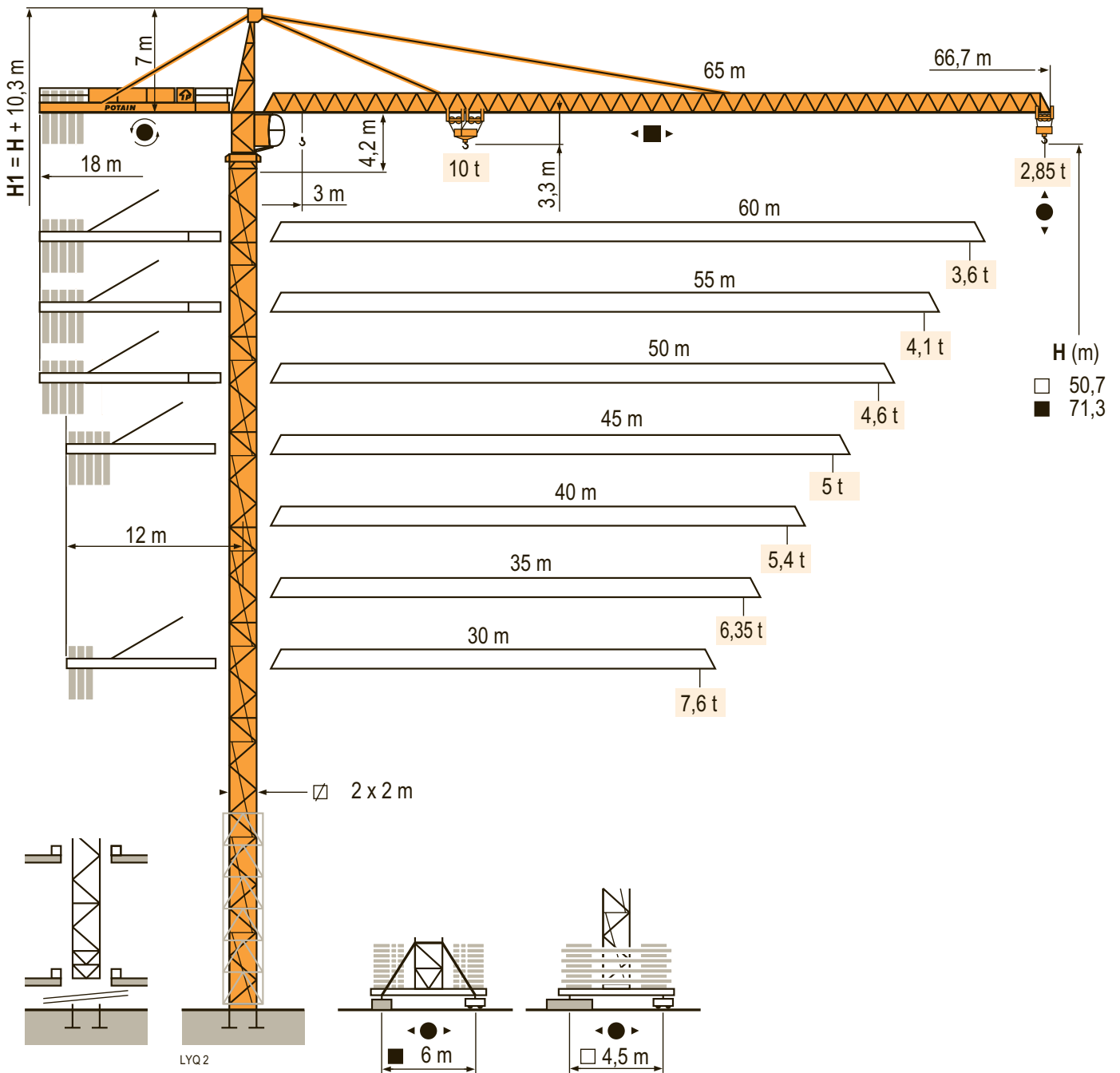


MD 265 B1 J10



CE FEM 1.001-A3

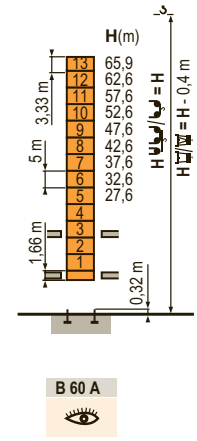
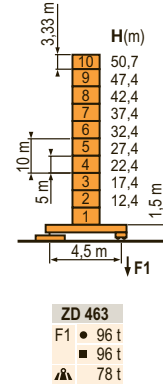
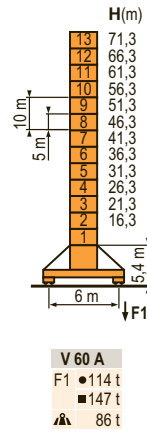
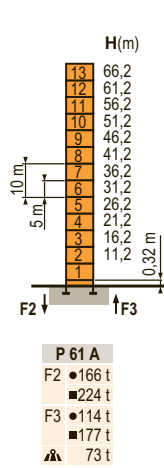


ARCOMET
www.arcomet.com

POTAIN

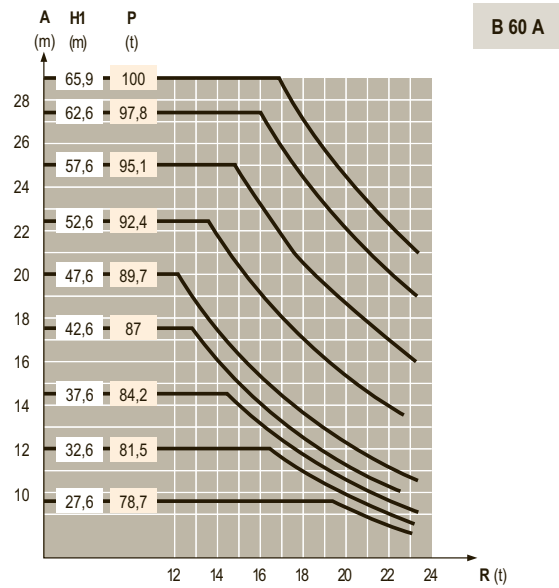
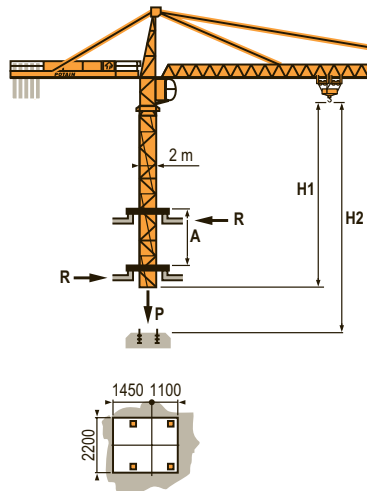
Mat / Réactions \square 2 m
 Maste / Eckdrücke 30 m \Rightarrow 65 m
 Masts / Reactions
 Mástil / Reacciones
 Torre / Reazioni
 Tramo / Reações

LVQ 1



Télescopage sur dalles
 Kletterkrane im Gebäude
 Climbing crane
 Telescopage gruas trepadoras
 Gru in cavedio
 Telescopagem sobre lages

LVQ 1



TOPKIT
 MD 265 B1 J10

| F | D | GB | E | I | P |
|--|--|---|---|---|---|
| ● Réactions en service \blacksquare Réactions hors service \blacktriangle A vide sans lest (ni train de transport) avec flèche et hauteur maximum. | ● Reaktionskräfte in Betrieb \blacksquare Reaktionskräfte außer Betrieb \blacktriangle Ohne Last, Ballast (und Transportachse), mit Maximalausleger und Maximalhöhe. | ● Reactions in service \blacksquare Reactions out of service \blacktriangle Without load, ballast (or transport axes), with maximum jib and maximum height. | ● Reacciones en servicio \blacksquare Reacciones fuera de servicio \blacktriangle Sin carga, sin lastre, (ni tren de transporte), flecha y altura máxima. | ● Reazioni in servizio \blacksquare Reazioni fuori servizio \blacktriangle A vuoto, senza zavorra (ne assali di trasporto) con braccio massimo e altezza massima. | ● Reações em serviço \blacksquare Reações fora de serviço \blacktriangle Sem carga (nem trem de transporte)- sem lastro com lança e altura máximas. |

Courbes de charges

Lastkurven

Load diagrams

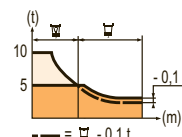
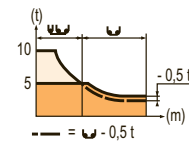
Curvas de cargas

Curve di carico

Curva de cargas

LYQ 1

| | | | | | | | | | | | | | | | | | | | | | | |
|------|-----|---|------|------|-----|-----|--------|-----|--------|------|-------|------|------|------|-------|-------|-------|-------|-------|-------|--------|-------|
| 65 m | 3 | ▶ | 20,6 | 22 | 25 | 27 | 30 | 32 | 35 | 36,9 | 40,3 | 42 | 45 | 47 | 50 | 52 | 55 | 57 | 60 | 62 | 65 m | |
| ▲▲▲ | | | 10 | 9,3 | 8 | 7,3 | 6,4 | 6 | 5,3 | 5 | 5 | 4,8 | 4,4 | 4,2 | 3,9 | 3,7 | 3,5 | 3,3 | 3,1 | 3 | 2,85 t | |
| 60 m | 3 | ▶ | | 23 | 25 | 27 | 30 | 32 | 35 | 37 | 40 | 41,4 | 45,1 | 47 | 50 | 52 | 55 | 57 | 60 m | | | |
| ▲▲▲ | | | | 10 | 9,1 | 8,3 | 7,4 | 6,8 | 6,1 | 5,7 | 5,2 | 5 | 5 | 4,8 | 4,4 | 4,3 | 4,1 | 3,8 | 3,6 t | | | |
| 55 m | 3 | ▶ | | 23,6 | 25 | 27 | 30 | 32 | 35 | 37 | 40 | 42,4 | 46,2 | 47 | 50 | 52 | 55 m | | | | | |
| ▲▲▲ | | | | 10 | 9,4 | 8,6 | 7,6 | 7 | 6,3 | 5,9 | 5,4 | 5 | 5 | 4,9 | 4,6 | 4,4 | 4,1 t | | | | | |
| 50 m | 3 | ▶ | | 23,7 | 25 | 27 | 30 | 32 | 35 | 37 | 40 | 42,6 | 46,5 | 47 | 50 m | | | | | | | |
| ▲▲▲ | | | | 10 | 9,4 | 8,6 | 7,6 | 7,1 | 6,4 | 5,9 | 5,4 | 5 | 5 | 4,9 | 4,6 t | | | | | | | |
| 45 m | 3 | ▶ | | 23,7 | 25 | 27 | 30 | 32 | 35 | 37 | 40 | 42 | 45 m | | | | | | | | | |
| ▲▲▲ | | | | 10 | 9,4 | 8,6 | 7,6 | 7,1 | 6,4 | 5,9 | 5,4 | 5,1 | 5 t | | | | | | | | | |
| 40 m | 3 | ▶ | | 23,7 | 25 | 27 | 30 | 32 | 35 | 37 | 40 m | | | | | | | | | | | |
| ▲▲▲ | | | | 10 | 9,4 | 8,6 | 7,6 | 7,1 | 6,4 | 5,9 | 5,4 t | | | | | | | | | | | |
| 35 m | 3 | ▶ | | 23,7 | 25 | 27 | 30 | 32 | 35 m | | | | | | | | | | | | | |
| ▲▲▲ | | | | 10 | 9,4 | 8,6 | 7,6 | 7,1 | 6,35 t | | | | | | | | | | | | | |
| 30 m | 3 | ▶ | | 23,7 | 25 | 27 | 30 m | | | | | | | | | | | | | | | |
| ▲▲▲ | | | | 10 | 9,4 | 8,6 | 7,6 t | | | | | | | | | | | | | | | |
| 65 m | 2,3 | ▶ | 20,7 | 22 | 25 | 27 | 30 | 32 | 35 | 37,3 | 37,9 | 40 | 42 | 45 | 47 | 50 | 52 | 55 | 57 | 60 | 62 | 65 m |
| ▲▲▲ | | | 10 | 9,3 | 8,1 | 7,4 | 6,5 | 6 | 5,4 | 5 | 5 | 4,7 | 4,4 | 4,1 | 3,8 | 3,5 | 3,4 | 3,1 | 3 | 2,8 | 2,7 | 2,5 t |
| 60 m | 2,3 | ▶ | | 23,2 | 25 | 27 | 30 | 32 | 35 | 37 | 40 | 42 | 42,8 | 45 | 47 | 50 | 52 | 55 | 57 | 60 m | | |
| ▲▲▲ | | | | 10 | 9,2 | 8,4 | 7,4 | 6,9 | 6,2 | 5,8 | 5,3 | 5 | 5 | 4,7 | 4,5 | 4,1 | 3,9 | 3,7 | 3,5 | 3,3 t | | |
| 55 m | 2,3 | ▶ | | 23,8 | 25 | 27 | 30 | 32 | 35 | 37 | 40 | 42 | 43,1 | 43,9 | 47 | 50 | 52 | 55 m | | | | |
| ▲▲▲ | | | | 10 | 9,4 | 8,6 | 7,7 | 7,1 | 6,4 | 6 | 5,5 | 5,2 | 5 | 5 | 4,6 | 4,3 | 4,1 | 3,8 t | | | | |
| 50 m | 2,3 | ▶ | | 23,9 | 25 | 27 | 30 | 32 | 35 | 37 | 40 | 42 | 43,3 | 44,1 | 47 | 50 m | | | | | | |
| ▲▲▲ | | | | 10 | 9,5 | 8,7 | 7,7 | 7,2 | 6,5 | 6 | 5,5 | 5,2 | 5 | 5 | 4,6 | 4,3 t | | | | | | |
| 45 m | 2,3 | ▶ | | 23,9 | 25 | 27 | 30 | 32 | 35 | 37 | 40 | 42 | 43,3 | 44,1 | 45 m | | | | | | | |
| ▲▲▲ | | | | 10 | 9,5 | 8,7 | 7,7 | 7,2 | 6,5 | 6 | 5,5 | 5,2 | 5 | 5 | 4,9 t | | | | | | | |
| 40 m | 2,3 | ▶ | | 23,9 | 25 | 27 | 30 | 32 | 35 | 37 | 40 m | | | | | | | | | | | |
| ▲▲▲ | | | | 10 | 9,5 | 8,7 | 7,7 | 7,2 | 6,5 | 6 | 5,5 t | | | | | | | | | | | |
| 35 m | 2,3 | ▶ | | 24 | 25 | 27 | 30 | 32 | 35 m | | | | | | | | | | | | | |
| ▲▲▲ | | | | 10 | 9,5 | 8,7 | 7,8 | 7,2 | 6,5 t | | | | | | | | | | | | | |
| 30 m | 2,3 | ▶ | | 24 | 25 | 27 | 30 m | | | | | | | | | | | | | | | |
| ▲▲▲ | | | | 10 | 9,6 | 8,8 | 7,75 t | | | | | | | | | | | | | | | |



Lest de contre-flèche

Gegenauslegerballast

Counter-jib ballast

Lastre de contra flecha

Contrappeso

Lastros da contra lança

LYQ 1

| ▲▲▲ | 4 600 - 4 200 - 3 400 - 2 300 kg | | 4 200 - 700 kg | |
|------|----------------------------------|--------|----------------|--------|
| | ▲▲▲ | ▲ (kg) | ▲▲▲ | ▲ (kg) |
| 65 m | 18 m | 19 900 | 18 m | 19 600 |
| 60 m | 18 m | 18 400 | 18 m | 18 200 |
| 55 m | 18 m | 16 000 | 18 m | 15 400 |
| 50 m | 18 m | 13 700 | 18 m | 13 300 |
| 45 m | 12 m | 25 200 | 12 m | 24 500 |
| 40 m | 12 m | 24 100 | 12 m | 23 100 |
| 35 m | 12 m | 20 600 | 12 m | 19 600 |
| 30 m | 12 m | 16 000 | 12 m | 15 400 |

Lest de base

Grundballast

Base ballast

Lastre de base

Zavorra di base

Lastros da base

LYQ 1

| | | | | | | | | | | | | | | | |
|-------|--------|---|-------|------|------|------|------|------|------|------|------|------|------|------|------|
| ☑ 2 m | V 60 A | ● | H (m) | 71,3 | 66,3 | 61,3 | 56,3 | 51,3 | 46,3 | 41,3 | 36,3 | 31,3 | 26,3 | 21,3 | 16,3 |
| | | | ▲ (t) | 132 | 96 | 72 | 60 | 36 | 36 | 36 | 36 | 36 | 36 | 36 | 36 |
| ☑ 2 m | ZD 463 | ● | H (m) | 50,7 | 47,4 | 42,4 | 37,4 | 32,4 | 27,4 | 22,4 | 17,4 | 12,4 | | | |
| | | | ▲ (t) | 75 | 75 | 75 | 75 | 75 | 75 | 75 | 75 | 75 | 75 | | |

Ancrages

Verankerungen

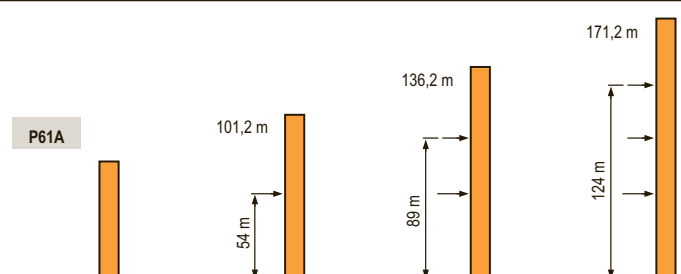
Anchorage

Anclaje

Ancoraggio

Ancoragem

LYQ 1



TOPKIT








MD 265 B1 J10

| | F | D | GB | E | I | P |
|-----------|------------------------------|-------------------------------|---------------------------|-------------------------------|------------------------------|------------------------------|
| A | Distance entre cadres | Abstand zwischen den Rahmen | Distance between collars | Distancia entra marcos | Distanza fra i telai | Distância entre quadros |
| H1 | Hauteur grue | Kranhöhe | Crane height | Altura grúa | Altezza gru | Altura da grua |
| P | Poids de la grue(en service) | Krangewicht (in Betrieb) | Crane weight (in service) | Peso de la grúa (en servicio) | Peso della gru (in servizio) | Peso da grua (em serviço) |
| R | Réaction horizontale | Horizontalkräfte | Horizontal reaction | Reaccion horizontal | Reazione orizzontale | Reacção horizontal |
| | Voir télescopage sur dalles | Siehe Kletterkrane im Gebäude | See climbing crane | Veja grua trepadora | Consultare gru in cavedio | Ver telescopagem sobre lages |

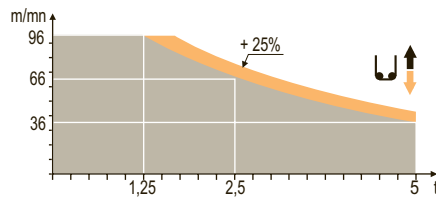
MD 265 B1 J10





Mécanismes
Antriebe
Mechanisms
Mecanismos
Meccanismi
Mecanismos

LYQ4

| | | U ↑ | | | | | | UU ↑ | | | | | | ch - PS hp | kW |  | | | | | |
|---|---------------------------------------|------------------------|---|--------|---|---|------|-----------------|------|-----------------------------|----|----|----|---------------|---------|---|----|----|-------|--|--|
|  | 50 LVF 25 Optima | m/min t | 3 → 12 → 36 → 46 → 66 → 96 | 5 | 5 | 5 | 3,75 | 2,5 | 1,25 | 1,5 → 6 → 18 → 23 → 33 → 48 | 10 | 10 | 10 | 7,5 | 5 | 2,5 | 50 | 37 | 557 m | | |
|  | 6 DVF 4 | m/min | 0 → 50 (10 t) 0 → 100 (5 t) 0 → 120 (2,5 t) | | | | | | | | | | | | 5,5 | 4 | | | | | |
|  | RVF 152 Optima + | tr/min U/min rpm | 0 → 0,8 | | | | | | | | | | | | 2 x 5,5 | 2 x 4 | | | | | |
|  | ZD 463 RT 443 A1 2V | m/min | 15 - 30 | | | | | | | | | | | | 4 x 5 | 4 x 3,7 | | | | | |
|  | V 60 A RT 544 A1 2V R ≥ 13 m | m/min | 13,5 - 27 | | | | | | | | | | | | 4 x 7 | 4 x 5,2 | | | | | |
| | | CEI 38 |  | IEC 38 | | | | | | | | | | | | | | | | | |
| | | 400 V (+6% -10%) 50 Hz | | | | | | kVA | | | | | | | | | | | | | |
| | | | | | | | | 50 LVF : 70 kVA | | | | | | | | | | | | | |

50 LVF 25
Optima



| | F | D | GB | E | I | P |
|---|--------------|------------|------------|--------------|---------------|--------------|
|  | Levage | Heben | Hoisting | Elevación | Sollevamento | Elevação |
|  | Distribution | Katzfahren | Trolleying | Distribución | Distribuzione | Distribuição |
|  | Orientation | Schwenken | Slewing | Orientación | Rotazione | Rotação |
|  | Translation | Kranfahren | Travelling | Traslación | Traslazione | Translação |



Document commercial non contractuel. Pour toute information technique se référer à la notice correspondante.

Unverbindliches Vertriebsdokument. Für technische Informationen, siehe die entsprechenden Anweisungen.

This commercial document is not legally binding. For any technical information, please refer to the corresponding instructions.

Documento commercial non contractuel. Para cualquier información técnica, ver la noticia correspondiente.

Documento commerciale non vincolante, per tutte le informazioni tecniche fare riferimento al catalogo istruzioni.

Documento comercial não contratual. Para qualquer informação técnica complementar consultar as respectivas instruções.



ARCOMET

Industrieweg 139 - 3583 Paal-Beringen - BELGIUM - T +32 (0)11 450 950 - EMAIL arcomet@arcomet.com - www.arcomet.com

MD 265 B1 J10 - 02 - © ARCOMET 2010

POTAIN 