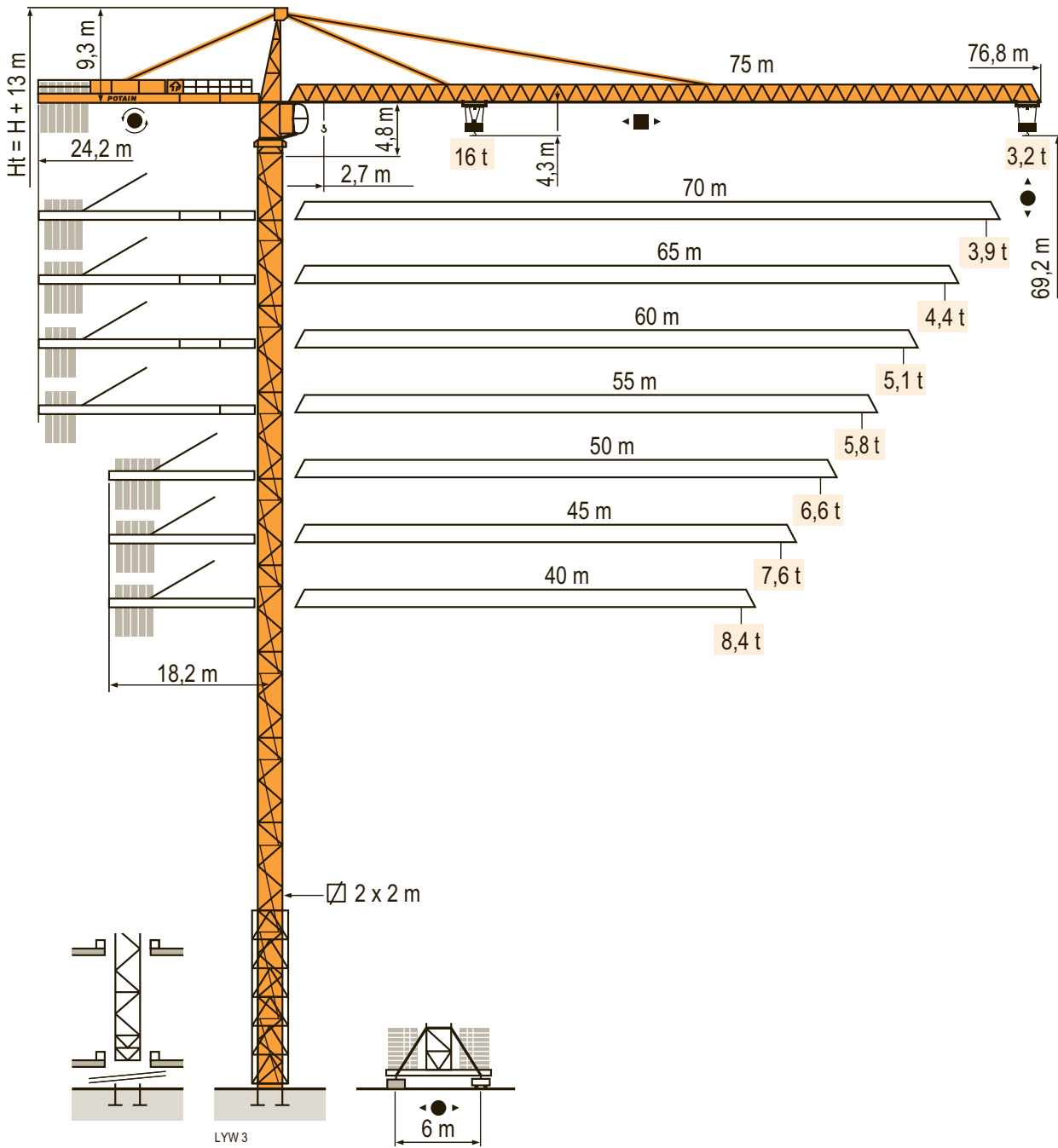


MD 365 B L16



CE FEM 1.001-A3

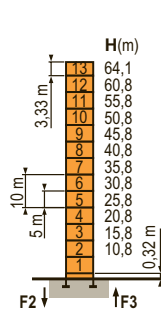


ARCOMET
www.arcomet.com

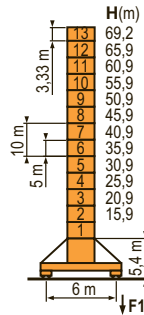
POTAIN

Mat / Réactions \square 2 m
 Maste /
 Eckdrücke 40 m \Rightarrow 75 m
 Masts /
 Reactions
 Mástil /
 Reacciones
 Torre / Reazioni
 Tramo /
 Reações

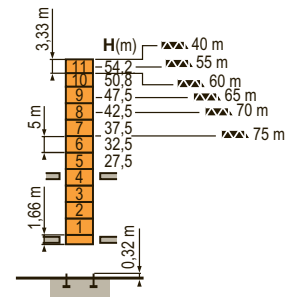
LVW2



P 62 A
 F2 ● 201 t
 ■ 200 t
 F3 ● 140 t
 ■ 140 t
 ▲ 99 t



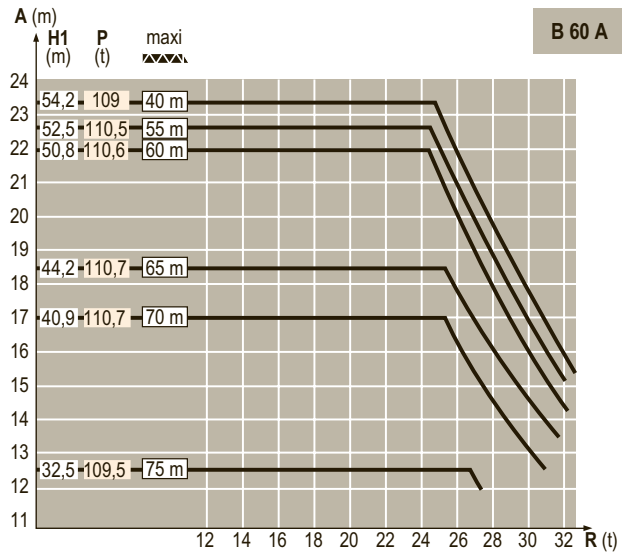
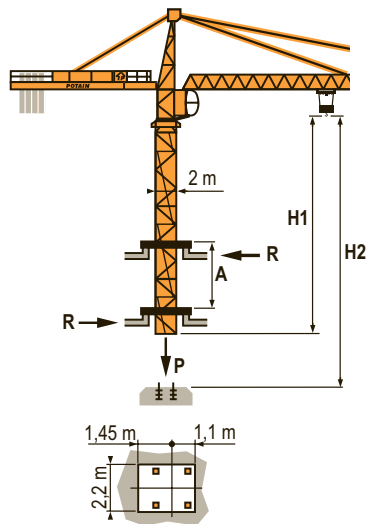
V 60 A
 F1 ● 126 t
 ■ 128 t
 ▲ 111 t



B 60 A

Télescopage sur dalles
 Kletterkrane im Gebäude
 Climbing crane
 Telescopage gruas trepadoras
 Gru in cavedio
 Telescopagem sobre lages

LVW1



TOPKIT
MD 365 B L16

| F | D | GB | E | I | P |
|--|--|--|---|---|--|
| ● Réactions en service ■ Réactions hors service ▲ A vide sans lest (ni train de transport) avec flèche et hauteur maximum. | ● Reaktionskräfte in Betrieb ■ Reaktionskräfte außer Betrieb ▲ Ohne Last, Ballast (und Transportachse), mit Maximalausleger und Maximalhöhe. | ● Reactions in service ■ Reactions out of service ▲ Without load, ballast (or transport axles), with maximum jib and maximum height. | ● Reacciones en servicio ■ Reacciones fuera de servicio ▲ Sin carga, sin lastre, (ni tren de transporte), flecha y altura máxima. | ● Reazioni in servizio ■ Reazioni fuori servizio ▲ A vuoto, senza zavorra (ne assali di trasporto) con braccio massimo e altezza massima. | ● Reações em serviço ■ Reações fora de serviço ▲ Sem carga (nem trem de transporte) - sem lastro com lança e altura máximas. |

Courbes de charges

Lastkurven

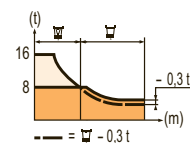
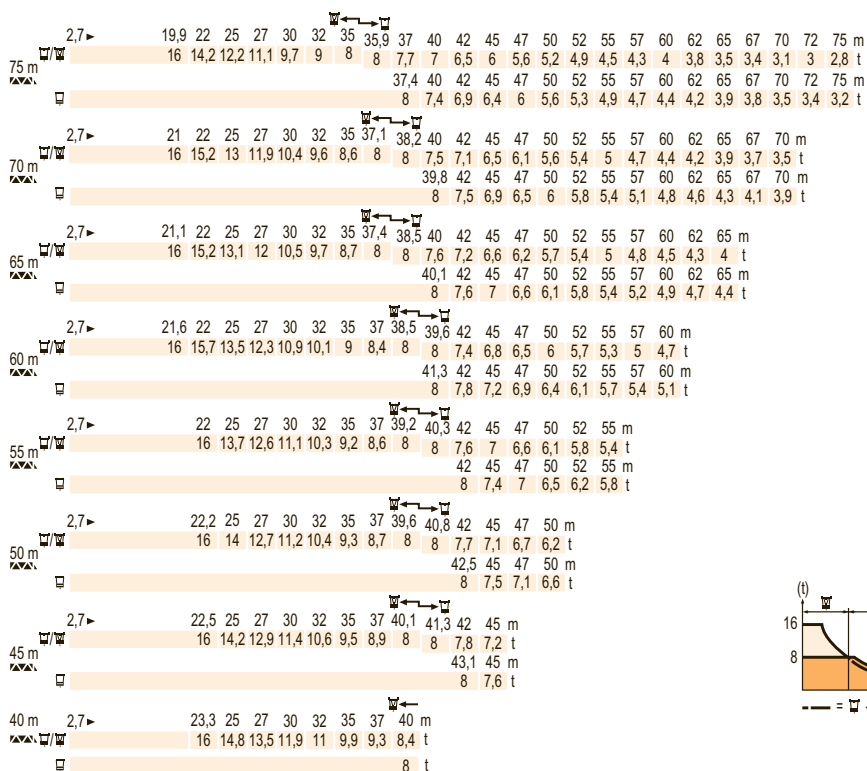
Load diagrams

Curvas de cargas

Curve di carico

Curva de cargas

LYW 3



Lest de contre-flèche

Gegenauslegerballast

Counter-jib ballast

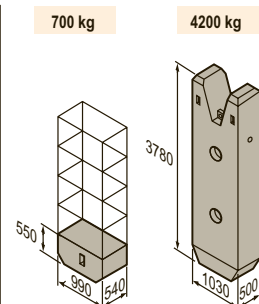
Lastre de contra flecha

Contrappeso

Lastros da contra lança

LYW 2

| | | 75 LVF | | | 100 LVF | | | 150 LCC | | |
|-------------|--------|---------|--------|--------|---------|--------|--------|---------|--------|--------|
| | | 4200 kg | 700 kg | ▲(kg) | 4200 kg | 700 kg | ▲(kg) | 4200 kg | 700 kg | ▲(kg) |
| 75 m | 24,2 m | 5 | 4 | 23 800 | 5 | 3 | 23 100 | 5 | 2 | 22 400 |
| 70 m | 24,2 m | 5 | - | 21 000 | 4 | 5 | 20 300 | 4 | 3 | 18 900 |
| 65 m | 24,2 m | 4 | 3 | 18 900 | 4 | 3 | 18 900 | 4 | 1 | 17 500 |
| 60 m | 24,2 m | 4 | - | 16 800 | 3 | 5 | 16 100 | 3 | 3 | 14 700 |
| 55 m | 24,2 m | 3 | 3 | 14 700 | 3 | 3 | 14 700 | 3 | 2 | 14 000 |
| 50 m (B60A) | 24,2 m | 3 | 2 | 14 000 | 3 | 1 | 13 700 | 3 | - | 12 600 |
| 50 m | 18,2 m | 5 | 5 | 24 500 | 5 | 4 | 23 800 | 5 | 3 | 23 100 |
| 45 m | 18,2 m | 5 | - | 21 000 | 4 | 5 | 20 300 | 4 | 4 | 19 600 |
| 40 m | 18,2 m | 4 | 2 | 18 200 | 4 | 1 | 17 500 | 4 | - | 16 800 |



Lest de base - Grundballast

Base ballast - Lastre de base

Zavorra di base - Lastros da base

LYW 1

| 2 m | V 60 A | H (m) | H (m) | | | | | | | | | | | | | |
|-----|--------|-------|-------|------|------|------|------|------|------|------|------|------|------|------|----|----|
| | | | 69,2 | 65,9 | 60,9 | 55,9 | 50,9 | 45,9 | 40,9 | 35,9 | 30,9 | 25,9 | 20,9 | 15,9 | | |
| | | (t) | 108 | 108 | 108 | 108 | 108 | 108 | 108 | 96 | 96 | 96 | 96 | 84 | 84 | 84 |

Ancrages

Verankerungen

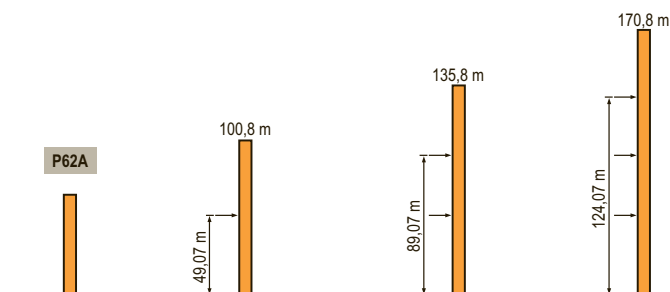
Anchorage

Anclaje

Ancoraggio

Ancoragem

LYW 2



TOPKIT



MD 365 B L16

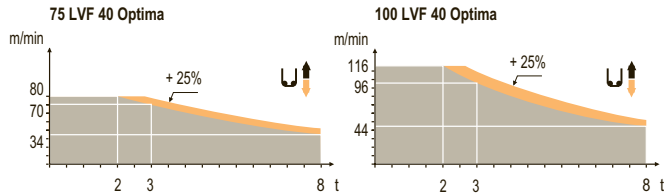
| | F | D | GB | E | I | P |
|-----------|------------------------------|-------------------------------|---------------------------|-------------------------------|------------------------------|------------------------------|
| A | Distance entre cadres | Abstand zwischen den Rahmen | Distance between collars | Distancia entra marcos | Distanza fra i telai | Distância entre quadros |
| H1 | Hauteur grue | Kranhöhe | Crane height | Altura grúa | Altezza gru | Altura da grua |
| P | Poids de la grue(en service) | Krangewicht (in Betrieb) | Crane weight (in service) | Peso de la grúa (en servicio) | Peso della gru (in servizio) | Peso da grua (em serviço) |
| R | Réaction horizontale | Horizontalkräfte | Horizontal reaction | Reaccion horizontal | Reazione orizzontale | Reacção horizontal |
| | Voir télescopage sur dalles | Siehe Kletterkrane im Gebäude | See climbing crane | Veja grua trepadora | Consultare gru in caviedo | Ver telescopagem sobre lages |





MD 365 B L16


Mécanismes
Antriebe
Mechanisms
Meccanismi
Mecanismos

LW5

| | | U ↑ | | | | | UU ↑ | | | | | ch - PS hp | kW |  | | | | | | | | | |
|--------|---------------------------------------|------------------------|---|----|--------|----|------|--------------|-----|-----|---------------|---------------|---------|---|----|------------|--|----|----|-----|-----|--------|-------|
| ▲ ▼ | 75 LVF40 Optima | m/min | 0 | → | 34 | → | 44 | → | 70 | → | 80 | 0 | → | 17 | → | 22 | → | 35 | → | 40 | 75 | 55 | 553 m |
| | t | | | | 8 | | | 6 | | 3 | 2 | | | 16 | | | 12 | | 6 | 4 | | | |
| | m/min | 0 | → | 44 | → | 56 | → | 96 | → | 116 | 0 | → | 22 | → | 28 | → | 48 | → | 58 | 100 | 75 | 1009 m | |
| t | | | | 8 | | | 6 | | 3 | 2 | | | 16 | | | 12 | | 6 | 4 | | | | |
| ▲ ▼ | 100 LVF40 Optima | m/min | 68 | → | 82 | → | 102 | → | 136 | → | 162 | 34 | → | 41 | → | 51 | → | 68 | → | 81 | 150 | 110 | 596 m |
| | t | | 8 | | 6 | | 4 | | 2 | 1 | 16 | | 12 | | 8 | | 4 | | 2 | | | | |
| ◀ ▶ | 6 DVF 6 | m/min | 0 → 42 (16 t) | | | | | 0 → 84 (8 t) | | | 0 → 100 (4 t) | | | 5,5 | 4 | | | | | | | | |
| ⊙ | RVF 182 Optima + | tr/min U/min rpm | 0 → 0,7 | | | | | | | | | 2 x 12 | 2 x 9 | | | | | | | | | | |
| ● | V 60 A RT 544 A1 2V R ≥ 13 m | m/min | 13,5 - 27 | | | | | | | | | 4 x 7 | 4 x 5,2 | | | | | | | | | | |
| | | CEI 38 |  | | IEC 38 | | | | | | | | | | | kVA | | | | | | | |
| | | 400 V (+6% -10%) 50 Hz | | | | | | | | | | | | | | | 75 LVF : 100 kVA 100 LVF : 125 kVA 150 LCC : 175 kVA | | | | | | |



| | F | D | GB | E | I | P |
|---|--------------|------------|------------|--------------|---------------|--------------|
|  | Levage | Heben | Hoisting | Elevación | Sollevamento | Elevação |
|  | Distribution | Katzfahren | Trolleying | Distribución | Distribuzione | Distribuição |
|  | Orientation | Schwenken | Slewing | Orientación | Rotazione | Rotação |
|  | Translation | Kranfahren | Travelling | Traslación | Traslazione | Translação |

 Document commercial non contractuel. Pour toute information technique se référer à la notice correspondante. Unverbindliches Vertriebsdokument. Für technische Informationen, siehe die entsprechenden Anweisungen. This commercial document is not legally binding. For any technical information, please refer to the corresponding instructions. Documento commercial no contractual. Para cualquier información técnica, ver la noticia correspondiente. Documento commerciale non vincolante, per tutte le informazioni tecniche fare riferimento al catalogo istruzioni. Documento comercial não contratual. Para qualquer informação técnica complementar consultar as respectivas instruções.



ARCOMET

Industrieweg 139 - 3583 Paal-Beringen - BELGIUM - T +32 (0)11 450 950 - EMAIL arcomet@arcomet.com - www.arcomet.com

